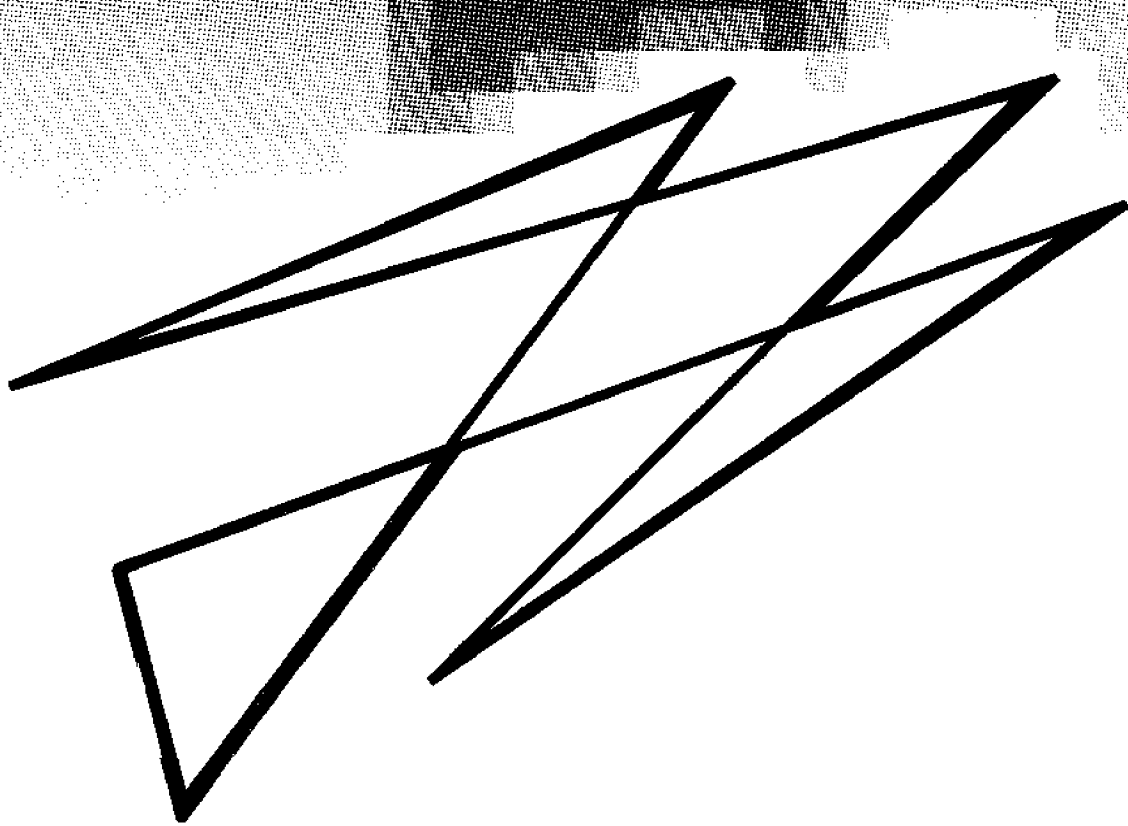




South Australian Economic Indicators



February 1995

ABS PUBLICATIONS, SOUTH AUSTRALIA

Cat. No.	Publication	Latest issue	Date of issue
GENERAL			
1202.4	Information Paper : Guidelines for the Development of Community Surveys <i>irr</i>		14 Nov. 1985
1301.4	South Australian Year Book <i>a</i> (\$29.50)	1995	25 Nov. 1994
1302.4	Pocket Year Book of South Australia <i>a</i> (\$8.50)	1994	11 Apr. 1994
1304.4	Local Government Area Statistics <i>irr</i> (\$20.00)	1993	30 July 1993
1306.4	South Australia at a Glance <i>a</i>	1994	28 Mar. 1994
1307.4	South Australian Economic Indicators <i>m</i> (\$10.50)	Jan. 1995	22 Dec. 1994
POPULATION AND VITAL STATISTICS			
2840.4	Adelaide, a Social Atlas <i>irr</i> (\$45.00)	Census 1991	31 Mar. 1993
2841.4	Aboriginal People in South Australia <i>irr</i> (\$15.00)	Census 1991	11 Feb. 1994
3201.4	Estimated Resident Population in Statistical Local Areas, Preliminary <i>a</i> (\$10.70)	30 June 1992	15 Apr. 1993
3202.4	Estimated Resident Population in Statistical Local Areas <i>irr</i> (\$10.00)	June 1986 to 1991	28 Oct. 1993
3204.4	Estimated Resident Population by Age and Sex in Statistical Local Areas <i>a</i> (\$25.00)	30 June 1992 to 1993	10 May 1994
3311.4	Demography <i>a</i> (\$27.50)	1992	21 Dec. 1993
3312.4	Deaths <i>a</i> (\$15.00)	1993	6 Dec. 1994
SOCIAL STATISTICS			
4104.4	Aboriginal Births and Deaths, Review of Data Quality and Statistical Summary <i>irr</i> (\$9.50)	1988	16 Mar. 1990
4402.4	Community and Volunteer Work <i>irr</i> (\$7.50)	Oct. 1988	4 Aug. 1989
4509.4	Crime and Safety <i>irr</i> (\$10.00)	Apr. 1991	23 Oct. 1991
PUBLIC FINANCE			
5502.4	Local Government Finance <i>a</i> (\$10.70)	1991-92	21 May 1993
5503.4	State and Local Authorities Finance <i>a</i> (\$13.30)	1991-92	2 July 1993
LABOUR FORCE			
6201.4	Labour Force <i>q</i> (\$16.50)	May 1994	14 July 1994
6204.4	Womens Work <i>irr</i> (\$3.00)	July 1992	23 July 1992
6215.4	Women's Employment Patterns, Adelaide Statistical Division <i>irr</i> (\$10.00)	Nov. 1992	17 Feb. 1993
RURAL			
7111.4	Principal Agricultural Commodities, Preliminary <i>a</i> (\$11.00)	1993-94	12 Aug. 1994
7120.4	Agricultural Statistics : Selected Small Area Data <i>a</i> (\$16.50)	1992-93	11 May 1994
7221.4	Livestock and Livestock Products <i>a</i> (\$16.50)	1992-93	11 Feb. 1994
7330.4	Summary of Crops <i>a</i> (\$22.00)	1992-93	10 Mar. 1994
7503.4	Value of Agricultural Commodities Produced <i>a</i> (\$16.50)	1992-93	19 May 1994
MANUFACTURING			
8221.4	Manufacturing Industry <i>a</i> (\$16.50)	1991-92	31 Oct. 1994
INTERNAL TRADE			
8623.4	Retailing in South Australia <i>irr</i> (\$15.00)	1991-92	21 Jan. 1994
8635.4	Tourist Accommodation <i>q</i> (\$25.00)	Sept. qtr 1994	8 Dec. 1994
BUILDING			
8710.4	Housing and Locational Preferences, Adelaide Statistical Division <i>irr</i> (\$10.00)	1991	23 Aug. 1991
8731.4	Building Approvals <i>m</i> (\$12.00)	Nov. 1994	6 Jan. 1995
8741.4	Dwelling Unit Commencements Reported by Approving Authorities <i>m</i> (\$11.00)	Oct. 1994	22 Dec. 1994
8752.4	Building Activity <i>q</i> (\$12.00)	Sept. qtr 1994	12 Jan. 1995
TRANSPORT			
9203.4	Drivers and Passengers : Travel to Work, Adelaide Statistical Division <i>irr</i> (\$10.00)	Oct. 1993	14 Dec. 1993

PUBLICATIONS RELEASED DURING JANUARY 1995

8731.4	Building Approvals, November 1994
8752.4	Building Activity, September quarter 1994

SOUTH AUSTRALIAN ECONOMIC INDICATORS

FEBRUARY 1995

P.M. GARDNER
Deputy Commonwealth Statistician
and Government Statist

© Commonwealth of Australia 1995

PREFACE

South Australian Economic Indicators is a monthly publication which contains the latest available data at the time of preparation for a range of statistical series that have been identified as indicators of economic activity in this State. In a number of cases the figures presented are preliminary and subject to revision in subsequent issues.

Written and graphic commentary have been included for many of the selected series and analysis has been augmented with the calculation of the percentage change from the previous reference period together with the presentation of comparative Australian data. Time series information has been included to provide a historical perspective on many of the selected indicators. Future issues may be expanded to include further historical data in response to expressed user needs. This product is under continuous review and any suggestions for enhancement will be welcomed.

More detailed information on each series (including explanatory and technical notes) can be obtained from other Australian Bureau of Statistics publications or alternative data sources. To assist those seeking further information a source publication for each of the series has been documented in the statistical summary.

If you have any inquiries concerning this publication please contact the editor, Brian Moody, telephone (08) 237 7315. All requests for statistical information should be directed to the ABS Information Service, GPO Box 2272 Adelaide SA 5001, telephone (08) 237 7100.

P.M.GARDNER
*Deputy Commonwealth Statistician
and Government Statist*

Australian Bureau of Statistics
Adelaide
January 1995

CONTENTS

	Page
Preface	iii
REVIEW	2
Overview	
State accounts	
International accounts	
Consumption and investment	
Production	
Prices	
Labour force and demography	
Incomes	
Financial markets	
STATISTICAL SUMMARY	14
State accounts	
International accounts	
Consumption and investment	
Production	
Prices	
Labour force and demography	
Incomes	
Financial markets	
TIME SERIES	
Merchandise exports by commodity group	16
Merchandise exports by country	16
Merchandise exports by industry of origin	17
Merchandise imports by commodity group	17
Turnover of retail establishments by industry	18
New motor vehicle registrations by type of vehicle	19
Actual private new capital expenditure by selected industry and type of asset	20
Tourist accommodation	21
Building approvals	22
Building commencements	23
Value of building work done during period	23
Production, livestock and selected commodities	26
Consumer price index, by group	26
Average retail prices of selected consumer items	27
Estimated resident population and components of population change	27
Labour force - numbers	28
Labour force - rates	29
Average weekly earnings of employees	30
Finance commitments	31
 For more information	 33

REVIEW

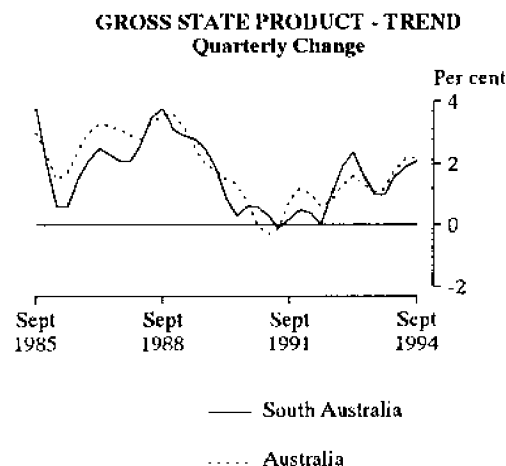
Overview

- The underlying trend estimate of employed persons in South Australia decreased over the three months to December 1994, following an upward movement between April and September. The trend unemployment rate moved downward throughout 1994.
- The trend estimate for dwelling units approved in South Australia during November 1994 recorded a slight fall from the October figure.
- South Australian exports for the three months ended November 1994 were 7.3% higher than for the corresponding period in 1993 while imports were 1.4% lower.
- The trend estimate for South Australian retail sales increased by 0.7% during November 1994 compared with an Australian rise of 0.4%.
- The provisional trend estimate for new motor vehicle registrations in South Australia for November 1994 was 0.5% below the October figure following falls of 0.2% in each of the previous two periods.
- Private new capital expenditure in South Australia for the September quarter 1994 was 17.1% higher than in the previous quarter and 32.5% above the September quarter 1993.
- The estimated resident population of South Australia increased by 6,890 persons during 1993-94 to 1,469,784.

State Accounts

Gross State Product (GSP)

GSP (trend estimates in 1989-90 prices) grew by 0.9% in the September quarter 1994, well below the national average of 1.4%, and the third lowest of all the States. Only Tasmania (0.2%) and the ACT (-0.1%) had lower growth rates for the same period.



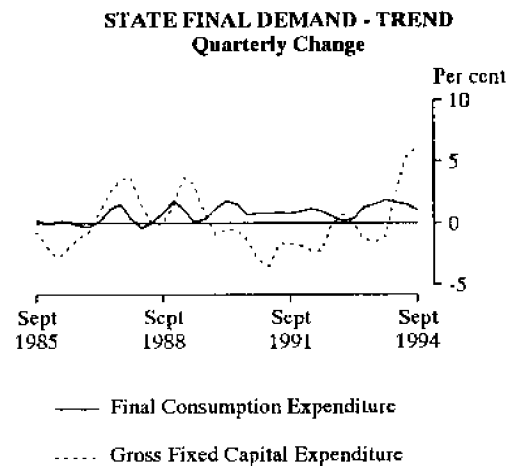
The rate of growth in GSP however has continued to increase progressively with rises of 0.1% (December quarter), 0.3% (March quarter) and 0.6% (June quarter).

The September quarter 1994 GSP was 2.0% higher than the September quarter 1993 but this was significantly below the national average growth of 5.7%.

State Final Demand

State Final Demand (trend estimates in 1989-90 prices) increased by 1.8% during the September quarter 1994, marginally higher than the national average of 1.6%. Private gross fixed capital expenditure rose strongly for the second consecutive quarter with an increase of 7.0% (5.4% in the June quarter). Private gross fixed capital expenditure was 14.3% higher than in September 1993.

Private final consumption expenditure increased by 0.9% in the September quarter 1994. It has grown by between 0.9% and 1.1% in each quarter since September 1993 and by 3.8% over the 12 month period.



International Accounts

Exports

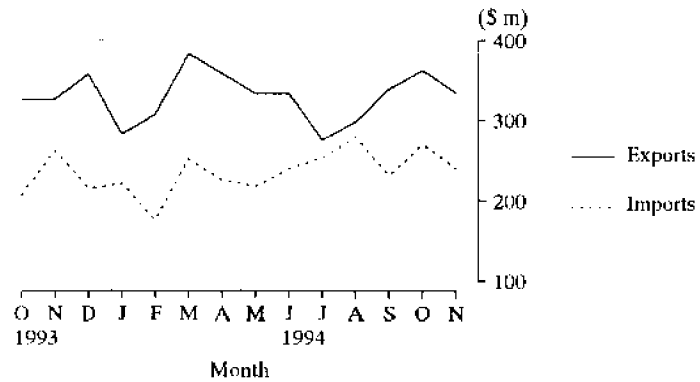
Overseas exports of South Australian produced commodities during the three months ended November 1994 were valued at \$1,036.0 million, 7.3% more than for the same period in 1993. Metals and metal manufactures constituted 11.3%; road vehicles, parts and accessories 8.6%; petroleum and petroleum products, and wool and sheepskins each accounted for 8.4% of the total value during the three months to November.

Exports to Japan accounted for 17.5% of the total during September to November, followed by ASEAN countries (14.9%) and New Zealand (9.6%).

Imports

Overseas imports into South Australia during the three months ended November (compiled from import documents lodged in South Australia) were valued at \$741.3 million, 1.4% below the level for the same period in 1993. Road vehicles, parts and accessories constituted 28.9%; machinery 22.5%; and metals and metal manufactures 6.7% of total imports during the three months to November.

**TOTAL MERCHANDISE IMPORTS AND EXPORTS
SOUTH AUSTRALIA**

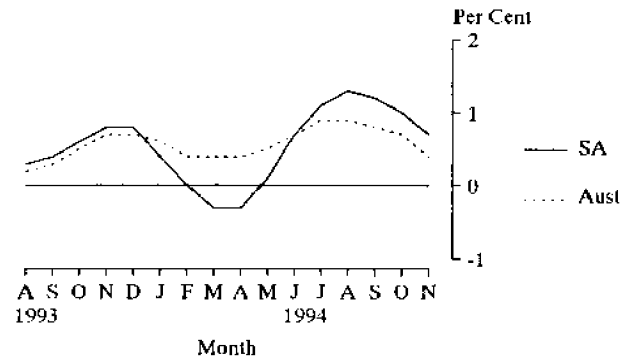


Consumption and Investment

Retail Turnover

The trend estimate indicates that South Australian retail sales increased by 0.7% during November 1994 compared with an Australian rise of 0.4%. Following a short period of decline early in 1994, the South Australian trend estimates have shown strong growth, with the previous four months showing growth of 1.0% or more. The retail turnover estimate in original terms for November 1994 was \$723.5 million, an increase of 3.3% from October 1994. All industries showed growth during this period except clothing and soft good retailing which remained at the October level.

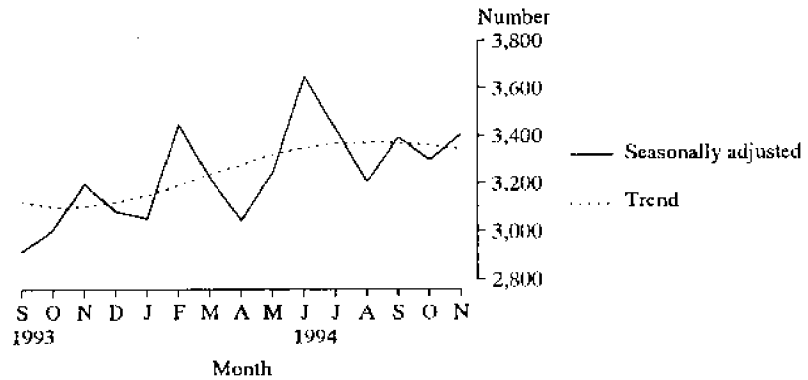
**RETAIL TURNOVER
PERCENTAGE CHANGE FROM PREVIOUS MONTH
TREND ESTIMATES**



New Motor Vehicle Registrations

The provisional trend estimate for new motor vehicle registrations in South Australia for November 1994 fell 0.5% from October, following falls of 0.2% in the previous two periods. An upward movement was evident in the 9 months prior to this downturn. The seasonally adjusted estimate for November 1994 rose by 3.3% from October 1994 and 6.6% from November 1993. In original terms there were 3,733 new motor vehicles registered in November 1994, 10.7% more than in October and 7.0% more than November 1993. For new passenger vehicles only, the leading makes registered in November 1994 were Ford (699 vehicles), Holden (685), Mitsubishi (548), Toyota (476) and Mazda (150).

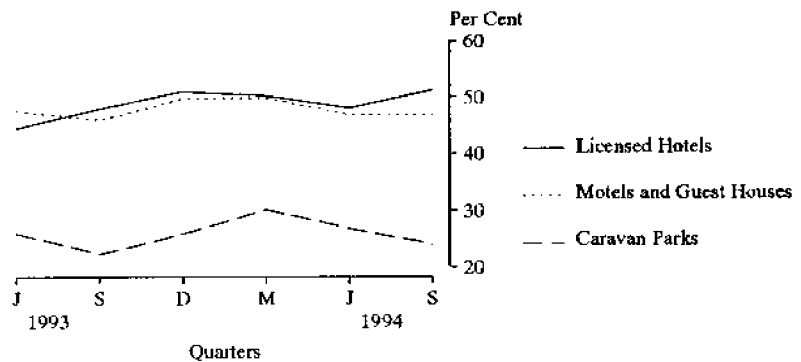
**NEW MOTOR VEHICLE REGISTRATIONS
TOTAL SOUTH AUSTRALIA**



Tourist Accommodation

When the September quarter 1994 is compared with the September quarter 1993, the number of holiday flats, units and houses available for short-term letting fell by 36 to 1,326. Unit nights occupied decreased by 4.9% and the unit occupancy rate fell from 35.2% to 34.0%. Unit lettings decreased by 2.7% with the average length of stay down slightly to 4.5 days. Accommodation takings fell by 5.2% from \$2.6m to \$2.4m while the average takings per unit night remained at \$58.

**HOTELS, MOTELS, GUEST HOUSES WITH FACILITIES
AND CARAVAN PARKS - ROOM AND SITE OCCUPANCY RATES**



Private New Capital Expenditure

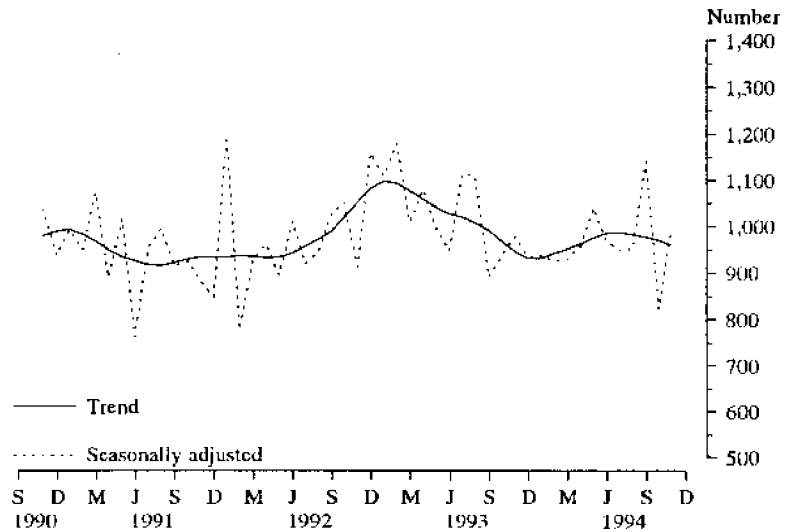
Private new capital expenditure in South Australia for the September quarter 1994 was \$475 million, an increase of 17.1% from the previous quarter and 32.5% above the September quarter 1993 figure. New buildings and structures accounted for \$152 million while equipment, plant and machinery amounted to \$323 million. The manufacturing industry accounted for \$130 million or 27% of expenditure in the September quarter 1994. In seasonally adjusted terms private new capital expenditure for the September quarter 1994 was \$515 million, a rise of 34% from the previous quarter.

Production

Dwelling Approvals

The trend estimate for dwelling units approved in South Australia during November 1994 was 960, a slight fall from the (revised) October figure of 970. The latest figures indicate that a steady decline has occurred since this series peaked in July 1994 when the estimate was 987 dwellings. Similarly, the national trend series has shown a downturn from the July high of 16,363 to 15,359 in November.

DWELLING UNITS APPROVED

***Dwelling Commencements***

From the Building Activity Survey, September quarter 1994, it was estimated that 3,076 dwellings commenced in that quarter, compared with 2,880 in the previous quarter, an increase of 6.8%. Nationally the increase was not quite as large, with a 5.1% rise to 49,140 dwelling units.

Value of Non-residential Building Approvals

The value of non-residential building work approved in November 1994 was \$30.2 million, an improvement of \$3.5 million on the previous month. Non-residential approvals Australia-wide stood at \$730.6 million, a 17.5% fall from the previous month. As a consequence of these opposing movements the South Australian proportion of the national total of non-residential approvals increased from 3.0% in October to 4.1% in November.

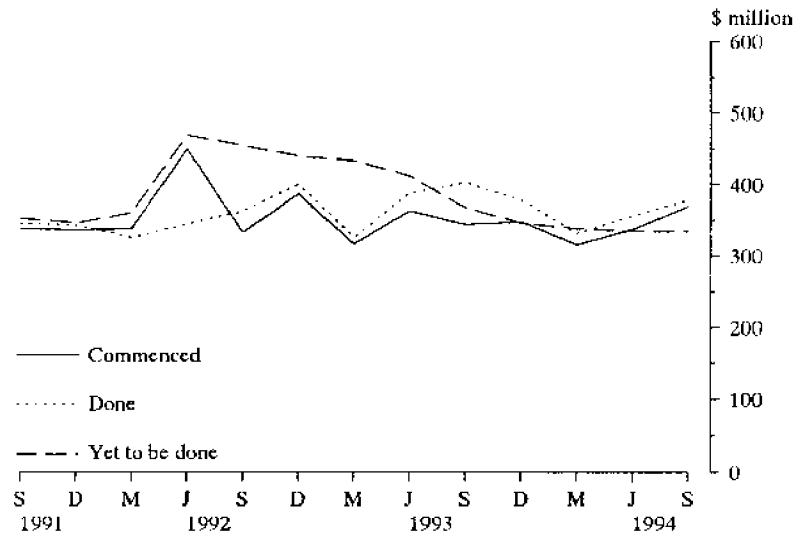
Value of Total Building Activity

The total value of *building work commenced* during the September quarter 1994 was \$369.8 million which was 9.7% more than the previous quarter. This comprised an increase of 8.0% in the value of non-residential work commenced and 9.9% increase in the value of residential commencements. Nationally, the value of building work commenced in the September quarter 1994 decreased by 4.4% from the June quarter 1994.

The value of *building work yet to be done* at the end of the September quarter 1994 was \$333.9, virtually identical to the value recorded for the June quarter 1994 (\$334.1 million). The composition of this work changed slightly, however, with the fall of \$9.5 million in non-residential work and \$1.1 million residential alterations being compensated by \$10.3 million more new residential work to be done. For Australia, the value of work yet to be done dropped slightly from the June quarter figure of \$9,160 million to \$9,021 million in the September quarter. However, the September quarter 1994 showed a 13.2% increase from September 1993 (\$7,971 million).

At \$378.5 million the value of *building work done* during the September quarter 1994 was 6.0% more than the previous quarter although it was still 6.0% below the September quarter level of 1993. By contrast, the value of work done for Australia during the September quarter 1994 was 4.2% higher than for the June quarter 1994 and 10.8% higher than for the corresponding quarter in 1993.

VALUE OF BUILDING ACTIVITY

*Value of Engineering Construction*

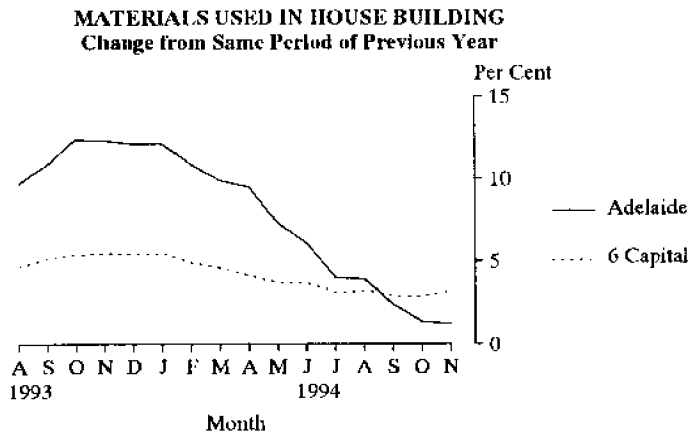
The September quarter estimate of engineering construction work done in South Australia was \$156.1 million, a fall of 21.8% from the (revised) figure for the June quarter 1994. The value of work done was lower in all but the heavy industry category of construction. The Australian value of engineering work done also dropped in the September quarter, from \$3,555 million to \$2,950 million with only Queensland, Northern Territory and ACT recording increases over the previous quarter.

VALUE OF ENGINEERING CONSTRUCTION
WORK DONE**Prices***Consumer Price Index*

In the September quarter 1994 the all groups Consumer Price Index (CPI) for Adelaide rose 0.4% resulting in an annual increase of 2.0%. Nationally prices rose 0.6% for the quarter and 1.9% on an annual basis.

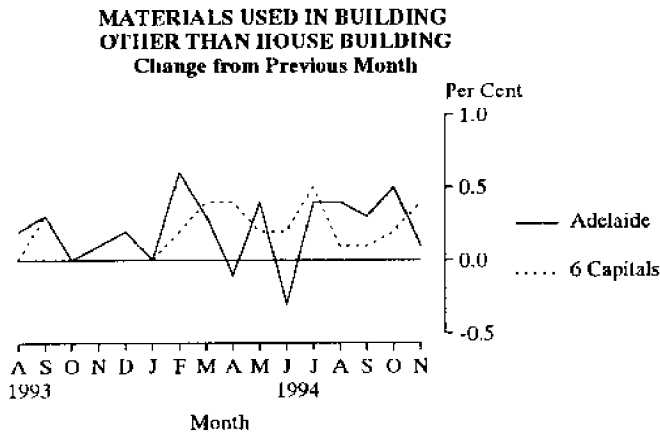
House Building Materials

Prices of house building materials fell by 0.1% in the month of November in Adelaide. Hobart recorded a similar fall. All other capital cities recorded rises, the largest being Brisbane at 0.7% followed by Melbourne (0.4%). Adelaide, as was the case in October, recorded the lowest annual price increase when compared with the corresponding month of 1993 (1.2%). Over the same period, other capital city increases were: Hobart (3.9%), Sydney (3.6%), Perth (3.5%), Melbourne (3.4%), Brisbane (2.7%) and Canberra (1.5%). The increase for the weighted average of the six state capitals over the same period was 3.2%.



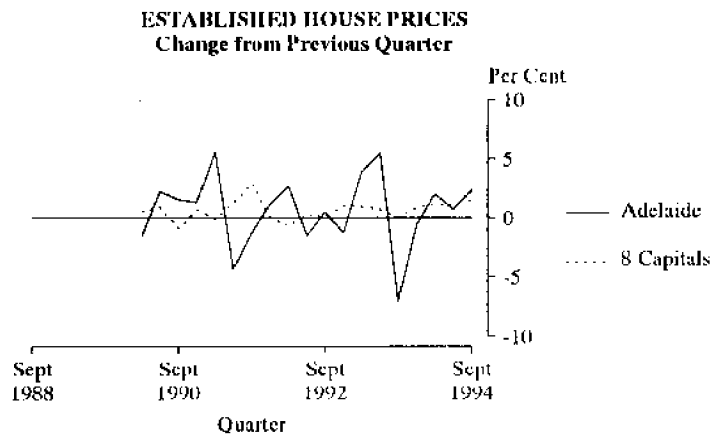
Non-house Building Materials

In the month of November 1994, for prices of materials used in building other than house building, Adelaide, at 0.1%, recorded the lowest price rise from the previous month of all the capital cities. Melbourne (0.6%), and Sydney and Canberra (both 0.4%) recorded the largest rises over the previous month. Comparing the change from corresponding month in 1993, Adelaide prices rose 2.7%, while Sydney recorded the greatest rise at 3.1%. Brisbane and Perth recorded rises of 2.3% and 2.4% respectively for the same period, and the weighted average of the six capitals rose 2.5%.



House Prices

Nationally, established house prices increased by 1.5% between the June and September quarters 1994. At the same time prices in Adelaide increased by 2.4%. On an annual basis the September quarter 1994 prices were 4.8% higher nationally and 4.7% higher in Adelaide than in the corresponding quarter in 1993.

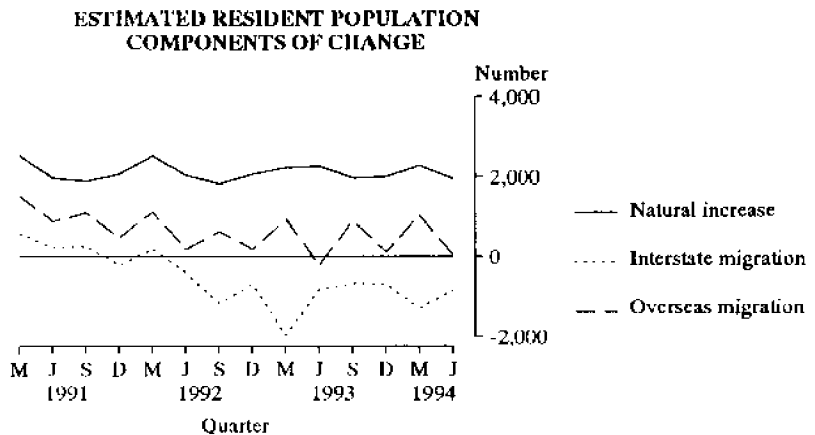


Darwin, with an annual increase of 17.8%, was again the pacesetter in prices of established houses, while Canberra was the only city to show a negative (-0.8%) annual movement.

Labour Force and Demography

Population

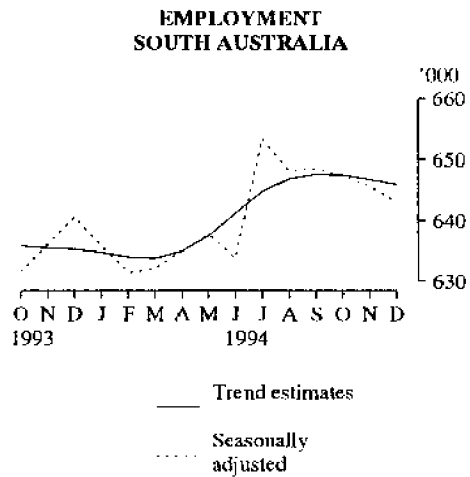
The estimated resident population of South Australia increased by 6,890 persons during 1993-94 to 1,469,784. The largest component was natural increase which accounted for 8,230 persons, while the net interstate migration outflow of 3,466 persons was partially offset by a net gain from overseas migration of 2,126 persons.



Employment

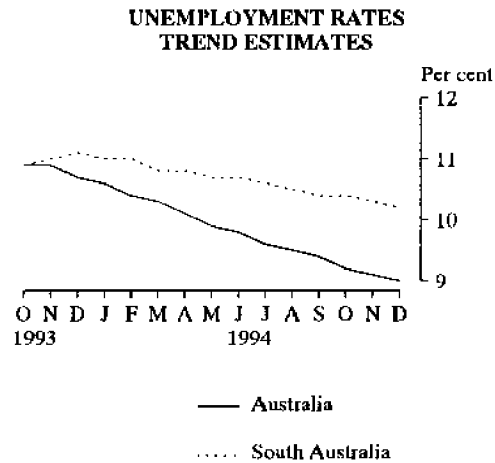
The underlying trend estimate of employed persons in South Australia has been decreasing over the past three months, following a general upward movement between April and September 1994. The December 1994 estimate of 645,900 was 10,600 more than the level of 12 months ago (or an increase of 1.7%).

The underlying trend estimate of employed persons in Australia has been increasing since February 1993, reaching 8,053,800 in December 1994. Over the past 12 months, full-time and part-time employment have increased by 2.7% and 5.8% respectively.



Unemployment

The December trend unemployment rate for South Australia has decreased to 10.2% (10.3% in November 1994), continuing a general downward movement evident throughout 1994. Between November and December 1994, the trend unemployment rate for males remained at 10.9% while the rate for females fell by 0.1 percentage point to 9.4%.



Overtime

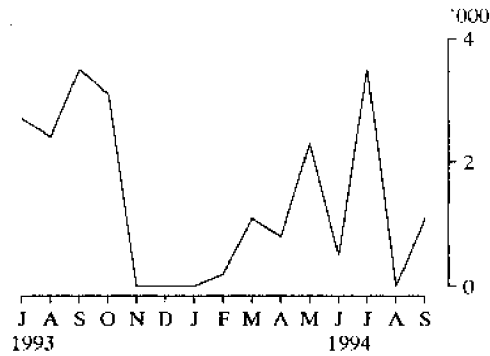
The proportion of employees who worked overtime in South Australia in November 1994 was 17.5% compared with 17.8% in November 1993.

Industrial Disputes

There were 1,100 working days lost through industrial disputes in South Australia during September 1994. Compared with the other States, South Australia recorded the second lowest level of disputation. In Australia, 28,200 working days were lost during September 1994.

In the twelve months to September 1994, 12,700 working days were lost through industrial disputation in South Australia.

**INDUSTRIAL DISPUTES
WORKING DAYS LOST
SOUTH AUSTRALIA**



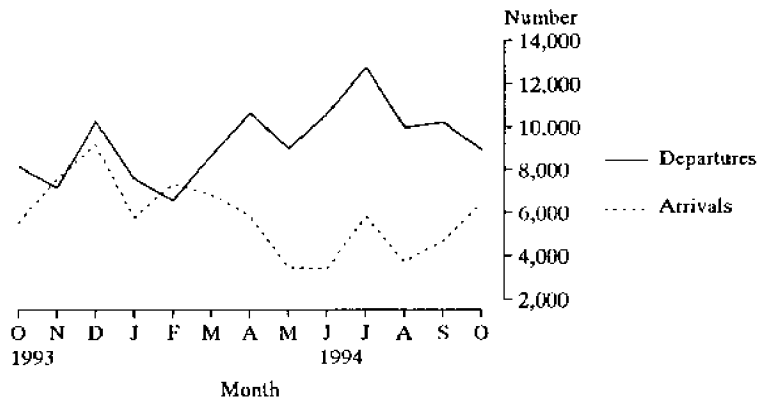
**Short-term Overseas
Visitors Arrivals**

Short-term visitor arrivals to South Australia rose to 6,461 in October 1994, 37.3% up from September 1994 and 16.3% higher than in October 1993. Principal sources of visitors were the United Kingdom (21.5%), USA (15.4%) and New Zealand (12.9%).

The Australian figures for October 1994 also showed an increase (up 18.8% to 300,300) This was also 12.4% higher than October 1993. The trend estimate for arrivals of overseas visitors increased 1.6% compared with September 1994. Sixty-two per cent of visitors arriving in the ten months to October 1994 stated an intention to stay in Australia less than two weeks.

The State or Territory of stay of overseas visitors is determined from the intended address reported on arrival in Australian ports and airports. A short-term visit is any intended length of stay of less than 12 months.

SHORT TERM ARRIVALS AND DEPARTURES



Short-term Resident Departures

There were 8,968 short-term departures of South Australian residents in October 1994 which was 12.2% lower than September 1994 but 9.8% higher than October 1993.

There were 23.7% fewer short-term departures of Australian residents in October than September 1994. However, this figure was still 4.2% greater than in October 1993. The trend estimate increased 1.2% compared with September 1994. For the ten months to October 1994 'holiday' was reported as the purpose of journey by 49% of all departing Australian residents.

Incomes

Average Weekly Earnings

Average weekly ordinary-time earnings of full-time adult employees in South Australia increased from \$599.80 in May 1994 to \$602.60 in August 1994. Male full-time ordinary-time earnings increased from \$622.90 in May 1994 to \$628.20 in August 1994. For the same period, the comparable level for females rose from \$551.40 to \$553.70.

Average weekly total earnings of all employees in South Australia were \$507.40 in August 1994, up from \$504.80 for the previous quarter.

Since it is an average of earnings across all employees, changes in average weekly earnings may occur through changes in employment as well as changes in pay levels.

Award Rates of Pay

Over the 12 months to October 1994, the weekly award rates of pay index for full-time employees in South Australia increased by 1.5%.

For full-time adult male employees, the largest annual movement of the index occurred in the construction industry (an increase of 3.4% since October 1993).

For full-time adult female employees, the largest annual movement of the index occurred in the manufacturing industry (an increase of 2.7% since October 1993).

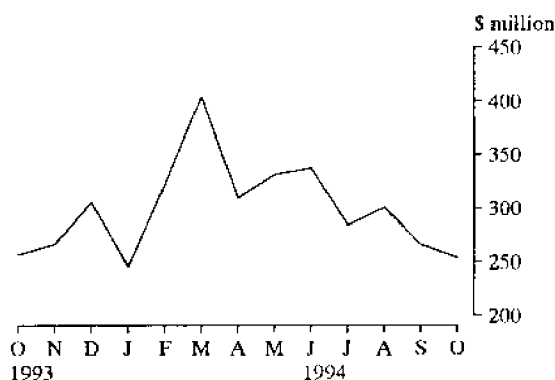
Financial Markets

Housing Finance

During the month of October 1994 total housing finance commitments for owner occupied dwellings decreased by \$11.9 million (4.5%) to \$254.0 million. This was a continuation of the downward trend evident since the peak of \$404.5 million in March 1994.

The main component, financing commitments for the purchase of established dwellings was down by \$13.6 million (8.0%) to \$156.9 million. Financing commitments for construction of dwellings was down by \$3.7 million (8.6%) to \$38.6 million. However, purchase of newly erected dwellings increased by \$1.8 million (15.0%) to \$14.0 million but this was the lowest October figure since 1989.

SECURED HOUSING FINANCE COMMITMENTS TO INDIVIDUALS
SOUTH AUSTRALIA



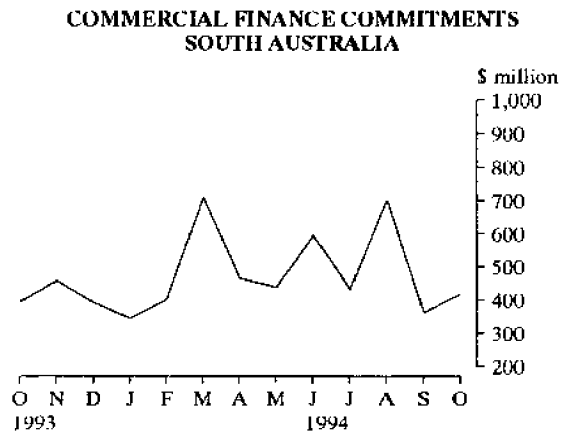
Personal Finance

The total of personal finance commitments was \$160.3 million in October 1994, a decrease of \$5.6 million (3.4%) from September. Personal finance commitments under fixed loan commitments decreased by \$5.0 million (4.1%) to \$115.5 million. The main component of this category, 'used motor cars and station wagons' decreased by \$2.5 million to \$36.7 million while 'new motor vehicles and station wagons' increased by \$0.8 million (5.6%) to \$14.5 million. 'Refinancing' fell by \$2.2 million (9.4%) continuing the downward trend evident since June.

Personal finance commitments under revolving credit commitments decreased minimally by \$0.7 million (1.4%) to \$44.8 million.

Commercial Finance

During October 1994 total commercial finance commitments rose by \$56.2 million (15.6%) to \$417.6 million. A large increase was recorded for commitments under revolving credit facilities and a minor rise occurred for commercial finance commitments under fixed loan facilities.



Commitments under revolving credit facilities increased by \$52.6 million (39.9%) to \$184.5 million with the category of 'manufacturing' up \$32.7 million to \$41.3 million and 'wholesale trade' up \$18.0 million to \$43.0 million.

Commercial finance commitments under fixed loan facilities increased by \$3.6 million (1.6%) to \$233.1 million giving the highest October figure since 1991.

Lease Finance

The value of goods under new finance lease commitments fell for the fourth consecutive month to total \$20.6 million in October 1994. The last month's decrease was notable, falling by \$3.9 million (15.8%) from the September figure of \$24.5 million. The greatest decrease was for 'electronic data processing equipment' down \$4.7 million from the very high September figure.

Total motor vehicles increased by \$0.7 million (5.2%) to \$14.2 million in October 1994 with the main increase being for 'used motor vehicles and station wagons, not subject to depreciation' which rose by \$0.9 million from the low figure for September of \$1.8 million. Lease finance for 'manufacturing equipment' rose in October by \$0.8 million to \$1.4 million and 'new heavy trucks' by \$0.7 million to \$1.4 million. 'Agricultural machinery and equipment' dropped to \$92,000, its lowest since October 1991.

STATISTICAL SUMMARY

Indicator	SOUTH AUSTRALIA					AUSTRALIA				
	Reference period	No.	% change		No.	% change		SA as a % of Australia	Source index	
			Over pre- ceding period	Over same period year		Over pre- ceding period	Over same period year			
State Accounts										
Gross domestic product (I)										
Current prices	\$m	Sep. qtr 94	8,143	2.1	5.4	111,038	2.5	7.8	7.3	1
1989-90 prices trend	\$m	Sep. qtr 94	7,389	0.9	2.0	102,948	1.4	5.7	7.2	1
Wages, salaries and supplements										
1989-90 prices trend	\$m	Sep. qtr 94	4,163	1.8	4.7	55,324	2.2	6.9	7.5	1
Private final consumption expenditure										
Current prices	\$m	Sep. qtr 94	5,238	4.6	5.7	69,191	4.1	7.2	7.6	1
1989-90 prices trend	\$m	Sep. qtr 94	4,591	0.9	3.8	61,244	1.1	4.6	7.5	1
Private gross fixed capital expenditure										
1989-90 prices trend	\$m	Sep. qtr 94	1,045	7.0	14.3	17,745	4.8	18.0	5.9	1
International Accounts										
Exports (excluding re-exports)	\$m	Nov. 94	334.5	-7.8	2.7	5,511	-0.4	5.1	6.1	2
Imports	\$m	Nov. 94	240.1	-11.0	-8.8	6,406	1.8	9.7	3.7	3
Consumption and Investment										
Retail turnover										
Current prices original	\$m	Nov. 94	723.5	3.3	6.3	9,550.1	2.4	7.2	7.6	4
Current prices trend	\$m	Nov. 94	698.8	0.7	6.9	9,288.0	0.4	7.7	7.5	4
1989-90 prices original	\$m	Sep. qtr 94	1,692.1	3.5	4.7	22,860.8	3.6	6.9	7.4	4
New motor vehicle registrations										
Original	No.	Nov. 94	3,733	10.7	7.0	55,434	2.0	10.6	6.7	5
Trend	No.	Nov. 94	3,344	-0.5	7.7	52,615	0.9	13.3	6.4	5
Takings, licensed hotels, motels and guest houses with facilities	\$'000	Sep. qtr 94	34,734	6.7	4.8	759,895	12.7	13.1	4.6	6
Private new capital expenditure	\$m	Sep. qtr 94	475	17.1	32.5	7,885	-4.1	19.3	6.0	7
Private new capital expenditure	\$m	1993-94	1,491	..	-2.0	28,864	..	11.7	5.2	7
Expected private new capital expenditure	\$m	1994-95	1,519	..	-0.7	33,141	..	20.4	4.6	7
Production										
Dwelling unit approvals										
Original	No.	Nov. 94	1,047	31.0	3.3	15,681	4.3	-3.0	6.7	8
Trend	No.	Nov. 94	960	-1.0	1.5	15,359	-2.5	1.3	6.3	8
Dwelling unit commencements	No.	Sep. qtr 94	3,076	6.8	-5.5	49,140	5.1	6.9	6.3	9, 9a
Value of non-residential building approvals	\$m	Nov. 94	30.2	13.2	-0.4	731	-17.5	8.6	4.1	8
Value of total building activity										
Commenced	\$m	Sep. qtr 94	369.8	9.7	7.4	7,035.4	-4.4	11.7	5.3	9
Work done	\$m	Sep. qtr 94	378.5	6.0	-6.0	7,165.5	4.2	10.8	5.3	9
Work yet to be done	\$m	Sep. qtr 94	333.9	-0.1	-9.2	9,020.9	-1.5	13.2	3.7	9
Value of engineering construction work done	\$m	Sep. qtr 94	156.1	-21.8	-6.5	2,950	-17.0	3.0	5.3	10
Manufacturing production										
Electricity (SA and NT)	mill. kWh	Oct. 94	839	-5.3	-1.1	13,505	-0.4	0.3	6.2	12
Cheese	tonnes	Sept. 94	3,052	24.9	12.5	24,954	52.3	10.8	12.2	13
Red meat	tonnes	Nov. 94	24,191	17.8	-7.1	251,136	4.5	-0.6	9.6	14
Mineral exploration expenditure (other than for petroleum)	\$m	Sep. qtr 94	4.6	-20.7	-17.9	226	2.5	20.6	2.0	15

Indicator	Reference period	SOUTH AUSTRALIA					AUSTRALIA			SA as a % of Australia	Source index
		% change					% change				
		Over					Over				
		No.	period	same period	preceding period	previous year	No.	period	same period		
Prices											
CPI - All groups	1989-90=100	Sep. qtr 94	114.9	0.4	2.0	111.9	0.6	1.9	..	16	
Price index of materials used in house building	1985-86=100	Nov. 94	153.8	-0.1	1.2	156.4	0.4	3.2	..	17	
Price index of materials used in building other than house building	1989-90=100	Nov. 94	110.4	0.1	2.7	109.9	0.4	2.5	..	18	
Established house price index	1989-90=100	Sep. qtr 94	113.3	2.4	4.7	112.6	1.5	4.8	..	19	
Price index of project homes	1989-90=100	Sep. qtr 94	114.3	1.8	4.3	107.4	0.5	1.9	..	19	
Labour Force and Demography											
Population (resident at end of qtr)	'000	Jun. qtr 94	1,469.8	0.1	0.5	17,843.3	0.2	1.1	8.2	20	
Labour force											
Original	'000	Dec. 94	723.2	0.7	-0.5	8,963.8	2.0	1.7	8.1	21	
Trend	'000	Dec. 94	719.5	-0.2	0.7	8,853.7	0.1	1.5	8.1	21	
Employed persons											
Original	'000	Dec. 94	649.2	0.5	0.4	8,156.2	1.6	3.6	8.0	21	
Trend	'000	Dec. 94	645.9	-0.1	1.7	8,053.8	0.2	3.5	8.0	21	
Participation rate											
Original (a)	%	Dec. 94	61.9	0.4	-0.6	63.9	1.1	0.2	..	21	
Trend (a)	%	Dec. 94	61.6	-0.1	0.1	63.2	0.0	0.2	..	21	
Unemployment rate											
Original (a)	%	Dec. 94	10.2	0.2	-0.8	9.0	0.3	-1.7	..	21	
Trend (a)	%	Dec. 94	10.2	-0.1	-0.9	9.0	-0.1	-1.7	..	21	
Job vacancies	'000	Nov. qtr 94	4.5	0.0	60.7	66.0	-3.9	72.8	6.8	22	
Average weekly overtime per employee	hours	Nov. qtr 94	1.2	0.0	20.0	1.4	7.7	7.7	..	22	
Industrial disputes	'000 working days lost	Sept. 94	1.1	..	-68.2	28.2	-24.7	-65.3	3.9	23	
Short-term overseas visitors											
arrivals	No.	Oct. 94	6,461	37.3	16.3	300,304	18.8	12.4	2.2	24	
Short-term resident departures	No.	Oct. 94	8,968	-12.2	9.8	184,275	-23.7	4.2	4.9	24	
Incomes											
Average weekly earnings (full-time adults; ordinary time)	\$	Aug qtr 94	602.60	0.5	-0.1	620.40	0.5	3.0	..	25	
Award rates of pay (full-time adults, weekly)	June 1985=100	Oct. 94	144.6	0.2	1.5	142.0	0.1	1.3	..	26	
Financial markets											
Secured housing finance	\$m	Oct. 94	254.0	-4.5	-1.2	3,560.0	-10.7	-4.9	7.1	27	
Finance commitments											
Personal	\$m	Oct. 94	160.3	-3.4	17.4	2,055.4	-2.0	8.3	7.8	28	
Commercial	\$m	Oct. 94	417.6	15.6	5.7	6,659.4	-18.3	-4.2	6.3	29	
Lease	\$m	Oct. 94	20.6	-15.8	17.7	479.2	-11.3	4.6	4.3	30	
Interest rates											
Banks new housing loans (a)	%	Dec. 94	10.50	0.0	1.8	..	31	
Small overdraft rate (a)											
Minimum	%	Dec. 94	10.30	0.4	1.1	..	31	
Maximum	%	Dec. 94	11.00	0.5	1.5	..	31	

(a) Change is shown in terms of percentage points.

TIME SERIES

MERCHANDISE EXPORTS BY SELECTED COMMODITY GROUP

Final Production in SA

(\$'000)

Period	Meat and meat preparations	Cereals and cereal preparations	Wine	Wool and sheepskins	Machinery	Metals and metal manufactures	Fish and crustaceans	Road vehicles, parts and accessories	Petroleum and petroleum products	Total
ANNUAL										
1988-89	181,058	475,481	71,474	415,098	104,163	239,656	95,720	124,815	189,679	2,451,372
1989-90	244,374	724,369	73,484	285,650	111,944	371,136	111,760	161,704	188,105	2,828,081
1990-91	234,299	587,199	123,567	257,576	152,940	433,341	122,604	117,218	291,507	3,007,137
1991-92	270,237	565,582	165,914	351,096	176,536	489,030	147,532	137,091	341,477	3,431,139
1992-93	282,181	573,375	192,255	318,989	211,426	490,594	154,608	338,359	372,445	3,760,602
1993-94	324,727	435,227	238,367	291,001	223,447	462,250	186,870	351,065	276,515	3,888,158
MONTHLY										
1993 - 94 -										
September	22,721	36,500	31,693	17,009	20,303	42,137	15,186	29,068	32,429	314,847
October	31,567	5,778	25,962	31,181	24,118	34,182	21,169	36,065	29,208	325,435
November	28,770	34,612	14,614	30,518	18,605	32,400	21,028	50,317	13,270	325,676
December	30,208	35,139	14,765	33,935	18,518	37,504	16,560	45,612	28,909	357,641
January	26,804	49,416	9,889	28,667	10,303	36,612	13,611	3,303	15,194	281,973
February	21,462	59,163	13,991	20,986	16,521	34,859	11,219	30,123	23,270	307,383
March	33,395	50,935	19,012	28,800	25,135	39,154	20,854	26,264	28,331	383,100
April	29,137	30,093	22,269	21,157	17,947	40,786	14,224	31,463	28,592	358,882
May	35,616	40,755	19,407	27,002	18,022	59,002	17,616	15,797	15,326	332,697
June	26,340	41,603	21,679	26,490	19,090	45,512	12,413	12,958	29,830	332,633
1994 - 95 -										
July	16,844	24,151	17,993	21,467	20,641	28,241	14,862	28,264	8,490	274,683
August	16,441	20,282	22,287	16,510	17,720	43,510	9,563	29,613	26,350	297,713
September	24,615	36,638	29,219	22,493	18,818	45,350	7,652	27,492	39,155	338,845
October	28,286	27,555	29,479	26,451	22,556	32,340	23,182	26,459	21,224	362,688
November	30,529	21,738	15,469	38,424	24,635	39,804	19,824	34,730	26,958	334,478

MERCHANDISE EXPORTS BY SELECTED COUNTRIES

Final Production in SA

(\$'000)

Period	United States	European Community			New Zealand	East Asia				Other East Asia
		Middle East	United Kingdom	Other European Community		Japan	China	Hong Kong	ASEAN	
ANNUAL										
1988-89	184,903	397,324	108,635	231,434	230,263	390,207	51,975	55,474	230,112	141,380
1989-90	229,169	551,953	121,319	274,951	289,970	359,643	86,303	49,273	272,761	162,229
1990-91	321,032	325,450	186,353	270,722	179,193	438,970	146,434	80,640	403,566	214,966
1991-92	300,139	381,761	220,048	291,939	214,522	647,674	148,308	108,583	433,138	288,576
1992-93	352,764	314,049	237,520	327,696	288,421	649,684	208,135	171,803	475,253	306,922
1993-94	392,621	280,239	262,812	278,237	312,032	625,427	220,219	165,164	528,436	358,874
MONTHLY										
1993 - 94 -										
September	24,737	6,050	27,077	26,565	28,389	55,481	13,660	8,980	57,947	39,913
October	28,696	15,107	20,678	19,909	27,147	78,459	20,095	11,795	50,676	24,755
November	55,204	15,464	7,837	23,295	40,502	45,272	26,133	15,064	37,959	21,925
December	46,815	33,920	13,936	25,747	26,461	59,659	22,330	15,386	50,597	24,994
January	17,991	52,754	7,091	11,687	12,370	44,280	6,915	15,718	50,746	30,023
February	33,335	17,990	13,609	35,674	23,521	28,834	26,366	13,119	43,677	27,831
March	33,919	36,829	14,367	20,913	29,064	65,079	25,742	22,570	45,107	45,744
April	31,334	15,236	46,024	23,352	35,203	52,223	18,819	15,841	38,920	22,124
May	26,177	28,689	19,442	22,280	24,279	54,292	21,440	16,319	47,583	30,353
June	40,829	29,565	20,140	22,611	16,495	47,414	17,402	11,828	50,715	29,049
1994 - 95 -										
July	36,352	15,015	13,525	11,220	39,596	50,193	10,775	14,795	24,345	23,150
August	25,624	19,784	19,259	24,528	29,756	54,896	20,681	13,366	41,611	18,373
September	24,800	25,907	29,192	25,332	30,126	41,671	17,430	11,869	60,407	31,687
October	28,264	15,461	47,751	24,971	34,294	75,194	17,457	16,246	30,457	35,667
November	32,133	8,943	11,106	20,144	34,881	64,025	13,999	16,852	63,038	34,191

MERCHANDISE EXPORTS BY INDUSTRY OF ORIGIN
Final Production in SA
(\$'000)

Period	Agriculture, forestry and fishing	Mining	Food, beverages and tobacco	Petroleum, coal, chemical associated product	Manufacturing			Other	Total
					Metal product	Machinery and equipment	Other		
ANNUAL									
1988-89	891,829	107,269	511,427	176,018	255,046	268,737	96,031	145,015	2,451,372
1989-90	979,463	133,318	578,379	132,725	403,204	318,862	99,958	182,162	2,828,091
1990-91	804,154	120,930	591,117	264,813	471,899	335,347	155,351	263,526	3,007,137
1991-92	626,738	248,846	700,586	201,674	540,542	379,482	178,485	554,786	3,431,139
1992-93	559,996	294,586	764,372	195,354	509,303	641,206	178,726	617,060	3,760,602
1993-94	342,108	245,247	884,226	178,237	474,967	663,922	205,761	893,689	3,888,158
MONTHLY									
1993 - 94 -									
September	17,278	28,429	81,946	12,659	48,143	56,858	13,673	55,860	314,847
October	33,783	18,612	88,069	25,485	34,699	69,880	18,339	36,567	325,435
November	32,158	838	76,364	19,717	32,994	74,368	17,459	71,778	325,676
December	37,730	31,313	71,276	10,185	37,936	73,746	19,170	76,284	357,641
January	33,353	14,809	64,211	9,782	36,855	18,659	19,259	85,045	281,973
February	37,557	22,342	54,908	8,628	35,497	53,418	14,509	80,524	307,383
March	36,158	33,619	83,276	12,103	40,415	58,819	20,584	98,126	383,100
April	19,660	30,633	73,300	15,637	41,788	56,383	21,267	100,215	358,882
May	25,237	13,307	83,202	12,083	59,900	41,477	22,561	74,929	332,697
June	29,468	31,114	80,906	15,578	45,877	38,575	16,243	74,871	332,633
1994 - 95 -									
July	35,908	1,596	62,362	16,632	30,771	57,053	21,078	49,282	274,683
August	18,483	29,932	56,567	12,012	44,556	55,538	23,590	57,035	297,713
September	26,327	31,188	73,944	17,383	46,212	52,981	17,130	73,680	338,845
October	29,981	19,869	88,648	17,150	33,244	57,216	24,309	92,272	362,688
November	49,634	31,991	73,150	12,486	39,735	68,573	21,085	37,822	334,478

MERCHANDISE IMPORTS BY SELECTED COMMODITY GROUP
Import Documents Lodged in SA
(\$'000)

Period	Food, beverages and tobacco	Petroleum and petroleum products	Chemicals	Textiles	Metals and metal manu- factures	Machinery	Road vehicles, parts and accessories	Other manu- factured goods	Total
ANNUAL									
1988-89	60,395	169,397	144,766	47,592	135,225	411,092	415,120	344,344	1,861,822
1989-90	71,796	203,654	167,154	49,249	147,969	462,885	414,800	399,437	2,050,024
1990-91	78,926	425,262	140,894	49,087	135,772	515,226	372,603	366,304	2,193,851
1991-92	82,095	362,777	153,574	62,884	151,165	523,848	435,121	513,012	2,396,954
1992-93	91,756	570,334	186,001	57,434	255,924	609,212	661,714	521,723	3,068,122
1993-94	99,177	404,626	200,225	60,172	160,937	595,238	663,617	484,590	2,803,446
MONTHLY									
1993 - 94 -									
September	8,475	56,549	18,293	5,581	19,334	57,416	52,346	46,366	280,597
October	7,203	107	12,423	4,342	14,389	61,019	57,227	40,662	207,625
November	11,333	45,041	13,082	5,656	11,426	49,992	73,123	42,221	263,340
December	7,643	37,281	22,738	4,205	13,334	45,369	38,057	36,115	214,709
January	7,054	49,812	14,331	4,050	11,192	49,847	39,738	37,742	222,141
February	8,085	16,304	11,506	3,824	11,513	36,054	42,092	38,219	175,580
March	8,527	29,732	18,294	5,497	12,747	53,913	63,568	46,708	251,556
April	7,728	21,937	24,482	4,970	11,662	50,301	54,140	37,155	225,444
May	9,464	14,202	24,694	5,068	15,349	46,141	46,553	38,389	211,792
June	7,769	39,321	13,241	5,124	14,553	40,643	74,663	34,022	239,770
1994 - 95 -									
July	8,221	38,192	15,231	6,675	11,335	53,006	69,239	44,361	254,288
August	7,771	43,158	10,385	5,394	17,333	55,586	70,263	52,100	279,017
September	8,482	20,570	19,869	4,380	15,442	54,068	60,796	37,767	231,389
October	14,848	19,447	11,040	5,654	13,866	56,658	90,232	48,828	269,846
November	12,377	107	15,459	6,952	20,682	56,134	63,452	51,459	240,068

TURNOVER OF RETAIL ESTABLISHMENTS BY INDUSTRY
South Australia

<i>Period</i>	<i>Food retailing</i>	<i>Department stores</i>	<i>Clothing and soft good retailing</i>	<i>Household good retailing</i>	<i>Recreational good retailing</i>	<i>Other retailing</i>	<i>Hospitality and services</i>	<i>Total</i>
ANNUAL (\$ million)								
1985-86	2,086.1	833.3	404.8	607.6	226.0	312.4	938.0	5,408.2
1986-87	2,240.3	893.8	396.8	578.3	229.7	332.3	989.5	5,660.7
1987-88	2,378.5	951.2	416.7	634.5	237.5	367.0	1,082.7	6,068.1
1988-89	2,534.9	971.8	462.2	695.8	268.5	420.7	1,178.7	6,532.6
1989-90	2,679.8	1,041.1	521.1	739.5	291.6	467.1	1,212.9	6,953.1
1990-91	2,978.2	1,069.0	543.9	738.1	303.9	497.7	1,312.6	7,443.4
1991-92	3,163.1	1,087.4	466.5	758.8	278.7	515.7	1,370.6	7,640.8
1992-93	3,018.5	1,101.5	434.2	783.3	311.2	617.4	1,244.7	7,510.8
1993-94	3,152.3	1,107.8	466.1	849.2	354.9	639.6	1,277.8	7,847.7
PERCENTAGE CHANGE FROM PREVIOUS YEAR								
1986-87	7.4	7.3	-2.0	-4.8	1.6	6.4	5.5	4.7
1987-88	6.2	6.4	5.0	9.7	3.4	10.4	9.4	7.2
1988-89	6.6	2.2	10.9	9.7	13.1	14.6	8.9	7.7
1989-90	5.7	7.1	12.7	6.3	8.6	11.0	2.9	6.4
1990-91	11.1	2.7	4.4	-0.2	4.2	6.6	8.2	7.1
1991-92	6.2	1.7	-14.2	2.8	-8.3	3.6	4.4	2.7
1992-93	-4.6	1.3	-6.9	3.2	11.7	19.7	-9.2	-1.7
1993-94	4.4	0.6	7.3	8.4	14.0	3.6	2.7	4.5
MONTHLY, ORIGINAL								
1993 - 94 -								
September	254.5	86.1	36.9	67.8	29.6	53.5	96.4	624.8
October	261.4	89.7	38.4	71.8	29.4	51.9	108.7	651.3
November	264.4	102.0	40.1	75.8	30.4	55.3	112.7	680.7
December	320.0	167.5	53.6	91.1	44.3	75.9	134.1	866.5
January	255.9	76.7	34.1	70.1	31.3	50.1	110.7	628.9
February	245.6	71.1	30.0	64.3	28.8	49.0	104.3	593.1
March	278.1	81.9	38.2	73.8	28.8	52.5	112.0	665.3
April	255.9	86.5	44.7	64.8	26.2	50.5	101.1	629.7
May	253.9	91.3	41.0	68.0	25.6	52.4	102.4	634.6
June	251.1	90.7	39.5	70.7	25.3	52.0	95.6	624.9
1994 - 95 -								
July	264.3	83.8	38.5	68.6	27.4	54.3	110.0	646.9
August	262.4	84.6	37.7	69.1	26.7	57.6	111.9	650.0
September	266.5	87.4	41.3	67.6	26.0	60.3	121.3	670.4
October	275.6	93.3	43.6	73.2	28.2	59.1	127.4	700.4
November	276.9	103.5	43.6	78.0	30.5	63.0	128.0	723.5
MONTHLY, TREND								
1993 - 94 -								
September	260.6	91.4	37.8	69.1	30.1	51.9	103.8	644.6
October	261.6	91.2	38.4	70.3	30.7	52.0	104.6	648.7
November	263.2	91.3	38.9	71.2	31.1	52.4	106.0	654.0
December	264.6	91.7	39.3	71.9	31.2	52.9	107.5	659.1
January	265.2	92.0	39.6	72.4	30.8	53.4	108.5	662.0
February	264.7	92.3	39.8	72.6	29.9	53.8	108.5	661.7
March	263.5	92.6	39.8	72.7	29.0	54.3	107.8	659.7
April	262.4	92.9	39.6	72.4	28.2	54.8	107.5	657.7
May	262.3	93.2	39.4	71.7	27.6	55.6	108.5	658.2
June	263.6	93.6	39.4	71.0	27.5	56.5	111.0	662.5
1994 - 95 -								
July	266.0	93.9	39.8	70.6	27.7	57.5	114.4	669.9
August	268.8	94.1	40.4	70.8	28.1	58.6	117.9	678.8
September	271.5	94.1	41.3	71.4	28.6	59.5	120.7	687.0
October	273.7	93.9	42.1	72.1	29.1	60.2	122.8	693.9
November	275.2	93.5	43.0	72.9	29.7	60.5	123.9	698.8
PERCENTAGE CHANGE FROM PREVIOUS MONTH, TREND ESTIMATES								
1993 - 94 -								
November	0.6	0.1	1.3	1.3	1.3	0.8	1.3	0.8
December	0.5	0.4	1.0	1.0	0.3	1.0	1.4	0.8
January	0.2	0.3	0.8	0.7	-1.3	0.9	0.9	0.4
February	-0.2	0.3	0.5	0.3	-2.9	0.7	0.0	0.0
March	-0.5	0.3	0.0	0.1	-3.0	0.9	-0.6	-0.3
April	-0.4	0.3	-0.5	-0.4	-2.8	0.9	-0.3	-0.3
May	0.0	0.3	-0.5	-1.0	-2.1	1.5	0.9	0.1
June	0.5	0.4	0.0	-1.0	-0.4	1.6	2.3	0.7
1994 - 95 -								
July	0.9	0.3	1.0	-0.6	0.7	1.8	3.1	1.1
August	1.1	0.2	1.5	0.3	1.4	1.9	3.1	1.3
September	1.0	0.0	2.2	0.8	1.8	1.5	2.4	1.2
October	0.8	-0.2	1.9	1.0	1.7	1.2	1.7	1.0
November	0.5	-0.4	2.1	1.1	2.1	0.5	0.9	0.7

NEW MOTOR VEHICLE REGISTRATIONS BY TYPE OF VEHICLE
South Australia

Period	Original			Seasonally adjusted			Trend estimate		
	Cars and station wagons	Other vehicles	Total	Cars and station wagons	Other vehicles	Total	Cars and station wagons	Other vehicles	Total
ANNUAL									
1983-84	41,204	9,769	50,973
1984-85	45,809	11,795	57,604
1985-86	40,840	9,620	50,460
1986-87	29,788	6,430	36,218
1987-88	29,915	5,775	35,690
1988-89	31,920	6,816	38,736
1989-90	35,211	7,808	43,019
1990-91	34,753	6,619	41,372
1991-92	32,351	5,333	37,684
1992-93	32,894	5,577	38,471
1993-94	32,806	5,781	38,587
PERCENTAGE CHANGE FROM PREVIOUS YEAR									
1984-85	-10.1	-17.2	-11.5
1985-86	12.2	22.6	14.2
1986-87	37.1	49.6	39.3
1987-88	-0.4	11.3	1.5
1988-89	-6.3	-15.3	-7.9
1989-90	-9.3	-12.7	-10.0
1990-91	1.3	18.0	4.0
1991-92	7.4	24.1	9.8
1992-93	-1.7	-4.4	-2.0
1993-94	0.3	-3.5	-0.3
MONTHLY									
1993 - 94 -									
September	2,805	336	3,141	2,576	341	2,917	2,691	433	3,124
October	2,602	466	3,068	2,532	476	3,008	2,671	428	3,099
November	2,951	539	3,490	2,717	482	3,199	2,676	429	3,105
December	2,725	447	3,172	2,656	428	3,084	2,691	433	3,124
January	1,940	299	2,239	2,643	411	3,054	2,708	443	3,151
February	2,769	418	3,187	3,003	443	3,447	2,730	462	3,192
March	3,068	577	3,645	2,720	503	3,223	2,748	492	3,239
April	2,219	432	2,651	2,557	488	3,045	2,756	526	3,282
May	2,672	563	3,235	2,697	549	3,247	2,769	555	3,324
June	3,196	826	4,022	2,951	696	3,648	2,788	567	3,355
1994 - 95 -									
July	2,870	523	3,393	2,902	527	3,428	2,811	559	3,369
August	2,869	513	3,382	2,686	522	3,208	2,834	541	3,375
September	3,140	479	3,619	2,904	489	3,393	2,846	523	3,369
October	2,883	488	3,371	2,797	502	3,300	2,854	508	3,362
November	3,144	589	3,733	2,891	518	3,410	2,851	493	3,344
PERCENTAGE CHANGE FROM PREVIOUS MONTH									
1993 - 94 -									
October	-7.2	38.7	-2.3	-1.7	39.6	3.1	-0.7	-1.2	-0.8
November	13.4	15.7	13.8	7.3	1.3	6.3	0.2	0.2	0.2
December	-7.7	-17.1	-9.1	-2.2	-11.2	-3.6	0.6	0.9	0.6
January	-28.8	-33.1	-29.4	-0.5	-4.0	-1.0	0.6	2.3	0.9
February	42.7	39.8	42.3	13.6	7.8	12.9	0.8	4.3	1.3
March	10.8	38.0	14.4	-9.4	13.5	-6.5	0.7	6.5	1.5
April	-27.7	-25.1	-27.3	-6.0	-3.0	-5.5	0.3	6.9	1.3
May	20.4	30.3	22.0	5.5	12.5	6.6	0.5	5.5	1.3
June	19.6	46.7	24.3	9.4	26.8	12.3	0.7	2.2	0.9
1994 - 95 -									
July	-10.2	-36.7	-15.6	-1.7	-24.3	-6.0	0.8	-1.4	0.4
August	0.0	-1.9	-0.3	-7.4	-0.9	-6.4	0.8	-3.2	0.2
September	9.4	-6.6	7.0	8.1	-6.3	5.8	0.4	-3.3	-0.2
October	-8.2	1.9	-6.9	-3.7	2.7	-2.7	0.3	-2.9	-0.2
November	9.1	20.7	10.7	3.4	3.2	3.3	-0.1	-3.0	-0.5

ACTUAL PRIVATE NEW CAPITAL EXPENDITURE BY SELECTED INDUSTRY AND TYPE OF ASSET
South Australia

Period	Industry			Total	Type of asset	
	Mining	Manufacturing	Other selected industries		New buildings and structures	Equipment, plant and machinery
ANNUAL (\$ million)						
1989-90	87.0	726.7	973.5	1,787.1	633.1	1,154.0
1990-91	122.1	742.2	987.5	1,851.7	627.8	1,223.9
1991-92	193.4	763.4	668.4	1,625.3	392.1	1,233.2
1992-93	218.2	564.0	739.3	1,521.6	416.2	1,105.4
1993-94	97.2	609.8	783.9	1,491.0	363.7	1,127.1
PERCENTAGE CHANGE FROM PREVIOUS YEAR						
1990-91	40.3	2.1	1.4	3.6	-0.8	6.1
1991-92	58.4	2.9	-32.3	-12.2	-37.5	0.8
1992-93	12.8	-26.1	10.6	-6.4	6.1	-10.4
1993-94	-55.5	8.1	6.0	-2.0	-12.6	2.0
QUARTERLY (\$ million)						
1992 - 93 -						
September	51.2	136.5	143.9	331.6	84.6	247.1
December	65.1	140.8	245.5	451.5	147.8	303.7
March	52.5	139.5	206.7	398.7	126.8	271.8
June	49.4	147.2	143.2	339.8	57.0	282.8
1993 - 94 -						
September	37.0	134.7	187.0	358.7	94.0	264.7
December	27.9	136.3	187.1	351.3	74.7	276.5
March	10.0	134.9	230.1	375.1	124.5	250.6
June	22.3	203.9	179.7	405.9	70.5	335.3
1994 - 95 -						
September	18.5	130.4	326.4	475.3	151.8	323.5
PERCENTAGE CHANGE FROM PREVIOUS QUARTER						
1992 - 93 -						
December	27.1	3.2	70.6	36.2	74.7	22.9
March	-19.4	-0.9	-15.8	-11.7	-14.2	-10.5
June	-5.9	5.5	-30.7	-14.8	-55.0	4.0
1993 - 94 -						
September	-25.1	-8.5	30.6	5.6	64.9	-6.4
December	-24.6	1.2	0.1	-2.1	-20.5	4.5
March	-64.2	-1.0	23.0	6.8	66.7	-9.4
June	123.0	51.1	-21.9	8.2	-43.4	33.8
1994 - 95 -						
September	-17.0	-36.0	81.6	17.1	115.3	-3.5

TOURIST ACCOMMODATION
South Australia

Period	Hotels, motels, guest houses with facilities			Holiday flats, units and houses			Short-term caravan parks		
	Number of guest rooms	Room occupancy (per cent)	Takings (\$'000)	Number of flats, units and houses	Unit occupancy (per cent)	Takings (\$'000)	Number of sites	occupancy (per cent)	Takings (\$'000)
ANNUAL									
1986-87	8,497	52.9	79,254	n.a.	n.a.	n.a.	18,773	18.1	12,647
1987-88	9,156	50.8	89,321	1,105	45.4	8,109	18,926	17.8	13,248
1988-89	9,396	50.5	102,737	1,171	45.8	9,792	19,195	17.4	14,711
1989-90	10,316	52.0	121,788	1,113	48.4	11,381	19,847	18.4	17,174
1990-91	10,445	48.0	128,634	1,210	43.9	10,339	19,794	17.7	18,102
1991-92	10,745	46.6	130,578	1,302	40.4	10,492	20,601	17.1	19,111
1992-93	10,632	46.5	129,882	1,338	40.2	10,740	20,038	22.3	20,113
1993-94	10,597	48.6	138,782	1,338	40.9	11,700	19,591	23.7	20,790
PERCENTAGE CHANGE FROM PREVIOUS YEAR									
1987-88	7.8	..	12.7	n.a.	..	n.a.	0.8	..	4.8
1988-89	2.6	..	15.0	6.0	..	20.8	1.4	..	11.0
1989-90	9.8	..	18.5	-5.0	..	16.2	3.4	..	16.7
1990-91	1.3	..	5.6	8.7	..	-9.2	-0.3	..	5.4
1991-92	2.9	..	1.5	7.6	..	1.5	4.1	..	5.6
1992-93	-1.1	..	-0.5	2.8	..	2.4	-2.7	..	5.2
1993-94	-0.3	..	6.9	0.0	..	8.9	-2.2	..	3.4
QUARTERLY									
1992 - 93 - September	10,743	45.1	30,435	1,279	34.0	2,213	20,661	17.8	3,901
December	10,763	47.8	36,063	1,323	40.0	2,905	20,462	22.1	5,167
March	10,739	47.0	32,210	1,313	49.9	3,263	20,159	26.6	6,084
June	10,632	46.2	31,175	1,338	36.8	2,359	20,038	22.8	4,961
1993 - 94 - September	10,604	46.8	33,133	1,362	35.2	2,551	19,992	19.1	3,916
December	10,650	50.3	38,096	1,377	41.6	3,290	19,925	23.4	5,370
March	10,625	50.0	35,007	1,321	50.9	3,546	19,606	28.4	6,611
June	10,597	47.4	32,547	1,338	36.1	2,313	19,591	24.3	4,893
1994 - 95 - September	10,560	48.7	34,734	1,326	34.0	2,418	19,988	20.9	4,211
PERCENTAGE CHANGE FROM PREVIOUS QUARTER									
1992 - 93 - December	0.2	..	18.5	3.4	..	31.3	-1.0	..	32.5
March	-0.2	..	-10.7	-0.8	..	12.3	-1.5	..	17.7
June	-1.0	..	-3.2	1.9	..	-27.7	-0.6	..	-18.5
1993 - 94 - September	-0.3	..	6.3	1.8	..	8.1	-0.2	..	-21.1
December	0.4	..	15.0	1.1	..	29.0	-0.3	..	37.1
March	-0.2	..	-8.1	-4.1	..	7.8	-1.6	..	23.1
June	-0.3	..	-7.0	1.3	..	-34.8	-0.1	..	-26.0
1994 - 95 - September	-0.3	..	6.7	-0.9	..	4.5	2.0	..	-13.9

BUILDING APPROVALS: SOUTH AUSTRALIA

Period	Number of dwelling units				Value (\$ million)			
	Houses		Total		New residential building	Alterations and additions to residential building	Non-residential building	Total building
	Private sector	Total	Private sector	Total				
ANNUAL								
1984-85	8,719	9,923	12,406	15,053	672	72	550	1,294
1985-86	6,392	7,382	8,873	10,940	545	80	619	1,244
1986-87	5,811	6,706	7,069	9,119	487	82	584	1,152
1987-88	6,276	6,900	7,355	8,942	497	94	749	1,340
1988-89	7,526	8,006	9,597	11,152	690	109	895	1,694
1989-90	7,246	7,675	10,158	11,646	733	110	914	1,757
1990-91	8,351	8,633	10,399	11,407	755	119	591	1,465
1991-92	8,613	8,931	10,222	11,258	756	124	627	1,506
1992-93	9,710	10,087	11,519	12,312	841	133	418	1,392
1993-94	7,547	7,908	8,841	9,433	670	101	326	1,096
PERCENTAGE CHANGE FROM PREVIOUS YEAR								
1985-86	-26.7	-25.6	-28.5	-27.3	-18.9	10.5	12.6	-3.9
1986-87	-9.1	-9.2	-20.3	-16.6	-10.7	2.3	-5.7	-7.4
1987-88	8.0	2.9	4.0	-1.9	2.2	14.6	28.2	16.3
1988-89	19.9	16.0	30.5	24.8	38.8	16.0	19.5	26.4
1989-90	-3.7	-4.1	5.8	4.3	6.1	1.2	2.1	3.7
1990-91	15.2	12.5	2.4	-2.1	3.1	8.6	-35.4	-16.6
1991-92	3.1	3.5	-1.7	-1.3	0.1	3.9	6.1	2.8
1992-93	12.7	12.9	12.7	9.4	11.3	7.1	-33.2	-7.6
1993-94	-22.3	-21.6	-23.2	-23.4	-20.4	-24.1	-22.1	-21.3
MONTHLY, ORIGINAL								
1993 - 94 -								
September	795	798	890	893	61.7	10.3	47.1	119.2
October	723	734	845	858	57.8	9.4	29.5	96.7
November	831	858	935	1,014	73.4	11.7	30.4	115.5
December	739	758	871	925	66.5	9.3	27.4	103.1
January	574	605	687	732	51.5	9.7	28.0	89.2
February	696	707	827	851	60.4	7.9	40.0	108.2
March	773	834	918	1,031	71.5	10.4	29.6	111.5
April	671	704	800	847	61.9	10.6	36.1	108.6
May	879	936	1,026	1,103	80.0	10.7	26.7	117.4
June	866	974	1,042	1,179	84.8	10.6	31.3	126.7
1994 - 95 -								
July	794	798	936	955	70.1	12.0	33.4	115.5
August	897	927	989	1,078	79.7	10.9	32.6	123.2
September	863	913	990	1,052	78.3	13.6	33.1	125.0
October	671	691	777	799	57.8	10.3	26.7	94.9
November	796	833	980	1,047	77.6	10.5	30.2	118.3
MONTHLY, TREND ESTIMATES								
1993 - 94 -								
October	807	834	922	968	n.a.	n.a.	n.a.	n.a.
November	790	815	905	946				
December	775	799	890	932				
January	765	792	883	931				
February	759	793	885	943				
March	755	792	889	951				
April	755	794	897	962				
May	762	802	906	975				
June	770	810	913	985				
1994 - 95 -								
July	775	816	914	987				
August	779	820	914	983				
September	780	820	913	977				
October	779	816	915	970				
November	777	810	916	960				
PERCENTAGE CHANGE FROM PREVIOUS MONTH, TREND ESTIMATES								
1993 - 94 -								
November	-2.1	-2.3	-1.8	-2.3	n.a.	n.a.	n.a.	n.a.
December	-1.9	-2.0	-1.7	-1.5				
January	-1.3	-0.9	-0.8	-0.1				
February	-0.8	0.1	0.2	1.3				
March	-0.5	-0.1	0.5	0.8				
April	0.0	0.3	0.9	1.2				
May	0.9	1.0	1.0	1.4				
June	1.0	1.0	0.8	1.0				
1994 - 95 -								
July	0.6	0.7	0.1	0.2				
August	0.5	0.5	0.0	-0.4				
September	0.1	0.0	-0.1	-0.6				
October	-0.1	-0.5	0.2	-0.7				
November	-0.3	-0.7	0.1	-1.0				

BUILDING COMMENCEMENTS
South Australia

Period	Number of dwelling units				Value (\$ million)				
	Houses		Total		New residential building	Alterations and additions to residential building	Non-residential building		Total building
	Private sector	Total	Private sector	Total			Private sector	Total	
ANNUAL									
1983-84	7,666	8,642	9,854	12,200	506	50	190	342	898
1984-85	8,502	9,641	11,728	14,205	660	66	346	510	1,236
1985-86	6,334	7,267	8,805	10,705	559	81	431	602	1,242
1986-87	5,345	6,458	6,524	8,913	476	75	430	674	1,225
1987-88	5,664	6,388	6,709	8,443	473	92	527	719	1,284
1988-89	7,132	7,580	8,622	10,235	642	104	760	964	1,710
1989-90	6,734	7,174	9,412	10,936	718	112	670	934	1,764
1990-91	7,863	8,177	9,673	10,821	728	118	367	554	1,400
1991-92	8,036	8,344	9,608	10,671	727	125	344	608	1,460
1992-93	9,122	9,416	10,881	11,635	816	122	206	459	1,397
1993-94	9,152	9,582	10,686	11,474	845	126	208	367	1,337
QUARTERLY									
1992 - 93 -									
September	2,293	2,353	2,581	2,795	190.0	27.9	64.9	113.9	331.9
December	2,325	2,356	2,802	2,907	206.4	32.3	56.5	148.2	386.9
March	2,136	2,204	2,704	2,910	203.4	23.9	37.8	88.1	315.5
June	2,369	2,504	2,795	3,024	216.3	38.2	46.3	108.4	363.0
1993 - 94 -									
September	2,611	2,776	2,987	3,254	238.4	30.9	42.6	75.3	344.5
December	2,336	2,395	2,672	2,798	205.4	35.6	60.9	106.6	347.7
March	1,977	2,023	2,406	2,549	188.1	29.8	51.1	97.6	315.4
June	2,235	2,396	2,628	2,880	213.4	30.2	55.2	93.5	337.1
1994 - 95 -									
September	2,406	2,519	2,848	3,076	234.6	34.2	56.8	101.0	369.8

VALUE OF BUILDING WORK DONE DURING PERIOD
South Australia

Period	New residential building				Alterations and additions to residential buildings	Non-residential building		Total building	
	Houses		Total			Private sector	Total	Private sector	Total
	Private sector	Total	Private sector	Total					
ANNUAL (\$ million)									
1983-84	312.0	348.0	385.2	464.5	48.3	194.8	327.0	627.0	839.8
1984-85	414.4	456.3	542.3	626.7	65.6	285.1	433.4	891.6	1125.7
1985-86	369.2	411.5	497.9	585.1	78.7	413.6	589.7	988.5	1253.4
1986-87	310.0	364.8	385.4	492.2	78.4	447.9	645.2	908.1	1215.8
1987-88	343.8	381.1	391.4	467.7	88.2	551.8	611.2	1027.0	1367.1
1988-89	450.2	469.2	538.8	597.0	104.1	657.5	902.2	1297.3	1603.3
1989-90	493.8	518.9	657.4	724.9	116.3	743.2	988.6	1514.0	1829.8
1990-91	578.3	600.2	713.6	782.3	122.0	621.9	876.6	1455.4	1780.8
1991-92	591.5	607.5	693.4	748.5	125.1	310.3	484.1	1127.5	1357.6
1992-93	647.2	660.9	743.8	780.6	127.1	297.9	570.9	1166.3	1478.6
1993-94	719.0	746.3	828.9	876.3	131.8	215.2	457.4	1174.5	1465.5
QUARTERLY (\$ million)									
1992 - 93 -									
September	157.5	160.8	174.6	184.7	30.9	88.1	147.2	293.5	362.8
December	163.3	166.3	185.9	194.8	34.7	91.5	171.4	312.1	400.9
March	155.0	157.7	182.7	189.4	25.6	56.0	111.3	264.1	326.3
June	171.3	176.6	200.6	211.8	35.9	62.3	140.9	296.6	388.7
1993 - 94 -									
September	197.3	203.8	224.0	235.7	32.3	59.7	134.7	315.9	402.8
December	178.8	187.6	208.4	222.9	36.5	54.6	119.6	299.4	378.9
March	167.4	172.2	192.3	202.3	32.4	50.2	96.8	274.3	331.5
June	175.7	182.9	204.2	215.3	30.8	53.1	111.0	287.5	357.2
1994 - 95 -									
September	185.2	192.5	214.6	228.1	37.2	63.5	113.2	315.0	378.5

PRODUCTION, SELECTED COMMODITIES
South Australia

<i>Period</i>	<i>Footwear (pairs)</i>	<i>Gas (m megajoules)</i>	<i>Electricity (including NT) ('000 kWh)</i>	<i>Coal (tonnes)</i>	<i>Sawn timber(a) (m3)</i>
ANNUAL					
1985-86	2,209,898	86,893	9,606,839	2,181,713	221,803
1986-87	2,147,468	82,550	9,666,694	2,435,010	194,458
1987-88	1,982,301	83,101	10,137,144	2,566,347	254,453
1988-89	2,062,085	86,546	10,588,647	2,674,215	292,335
1989-90	1,749,112	85,070	10,665,118	2,921,861	228,156
1990-91	1,837,602	73,265	8,878,357	2,441,040	240,193
1991-92	1,834,835	78,210	10,025,649	2,819,880	271,603
1992-93	1,406,434	83,000	10,226,734	2,753,610	317,096
1993-94	1,382,959	89,382	10,550,251	2,643,000	364,961
PERCENTAGE CHANGE FROM PREVIOUS YEAR					
1986-87	-2.8	-5.0	0.6	11.6	-12.3
1987-88	-7.7	0.7	4.9	5.4	30.9
1988-89	4.0	4.1	4.5	4.2	14.9
1989-90	-15.2	-1.7	0.7	9.3	-22.0
1990-91	5.1	-13.9	-16.8	-16.5	5.3
1991-92	-0.2	6.7	12.9	15.5	13.1
1992-93	-23.3	6.1	2.0	-2.4	16.7
1993-94	-1.7	7.7	3.2	-4.0	15.1
MONTHLY/QUARTERLY (b), ORIGINAL					
1993 - 94 -					
August	120,921	8,351	929,952	210,060	..
September	143,199	8,357	863,810	144,000	79,334
October	123,847	8,269	847,992	105,420	..
November	127,479	8,181	944,263	201,660	..
December	108,368	6,695	874,827	258,420	97,033
January	40,985	6,611	906,025	258,000	..
February	111,470	6,489	820,049	191,940	..
March	142,746	7,008	917,947	258,840	90,339
April	86,319	6,067	791,214	247,440	..
May	122,593	7,173	838,360	239,640	..
June	139,565	7,422	851,000	259,080	98,255
1994 - 95 -					
July	127,210	7,858	885,099	254,640	..
August	129,969	8,529	935,339	229,980	..
September	146,686	7,352	885,856	248,820	97,308
October	n.y.a.	8,074	838,622	105,240	..
PERCENTAGE CHANGE FORM PREVIOUS MONTH/QUARTER (b)					
1993 - 94 -					
September	18.4	0.1	-7.1	-31.4	-1.7
October	-13.5	-1.1	-1.8	-26.8	..
November	2.9	-1.1	11.4	91.3	..
December	-15.0	-18.2	-7.4	28.1	22.3
January	-62.2	-1.3	3.6	-0.2	..
February	172.0	-1.8	-9.5	-25.6	..
March	28.1	8.0	11.9	34.9	-6.9
April	-39.5	-13.4	-13.8	-4.4	..
May	42.0	18.2	6.0	-3.2	..
June	13.8	3.5	1.5	8.1	8.8
1994 - 95 -					
July	-8.9	5.9	4.0	-1.7	..
August	2.2	8.5	5.7	-9.7	..
September	12.9	-13.8	-5.3	8.2	-1.0
October	n.y.a.	9.8	-5.3	-57.7	..

(a) From Australian softwood logs only. (b) Sawn timber production data available quarterly only.

PRODUCTION, LIVESTOCK PRODUCTS AND SELECTED COMMODITIES
South Australia

<i>Period</i>	<i>Chicken</i>	<i>Pigmeat</i>	<i>Beef</i>	<i>Mutton</i>	<i>Lamb</i>	<i>Cheese</i>	<i>Wheat flour, other than self-raising</i>
ANNUAL (tonnes)							
1983-84	33,549	34,740	81,172	23,758	31,114	25,226	78,690
1984-85	35,882	36,508	79,111	35,800	30,136	23,273	74,643
1985-86	34,235	37,432	77,898	41,507	31,485	25,086	73,926
1986-87	33,776	40,761	90,283	43,934	32,416	27,438	80,310
1987-88	34,907	36,671	91,701	45,562	34,335	25,497	91,325
1988-89	32,946	40,364	87,160	42,159	36,203	24,704	96,418
1989-90	35,248	40,815	99,699	50,939	38,052	22,774	88,503
1990-91	31,945	38,644	87,036	65,434	32,038	24,522	83,727
1991-92	36,978	34,538	90,661	72,578	29,941	23,494	81,065
1992-93	38,619	38,153	96,338	65,689	39,334	26,140	87,761
1993-94	40,671	38,529	94,395	71,354	45,199	26,674	84,683
PERCENTAGE CHANGE FROM PREVIOUS YEAR							
1984-85	7.0	5.1	-2.5	50.7	-3.1	-7.7	-5.1
1985-86	-4.6	2.5	-1.5	15.9	4.5	7.8	-1.0
1986-87	-1.3	8.9	15.9	5.8	3.0	9.4	8.6
1987-88	3.3	-10.0	1.6	3.7	5.9	-7.1	13.7
1988-89	-5.6	10.1	-5.0	-7.5	5.4	-3.1	5.6
1989-90	7.0	1.1	14.4	20.8	5.1	-7.8	-8.2
1990-91	-9.4	-5.3	-12.7	28.5	-15.8	7.7	-5.4
1991-92	15.8	-10.6	4.2	10.9	-6.5	-4.2	-3.2
1992-93	4.4	10.5	6.3	-9.5	31.4	11.3	8.3
1993-94	5.3	1.0	-2.0	8.6	14.9	2.0	-3.5
MONTHLY (tonnes)							
<i>1993 - 94 -</i>							
September	3,048	3,430	9,437	8,002	3,084	2,712	6,506
October	3,388	3,151	8,699	7,776	3,616	3,436	5,534
November	3,024	3,529	9,313	9,320	3,860	3,004	5,812
December	3,699	2,563	7,715	6,203	3,325	2,864	6,084
January	3,403	2,543	7,528	4,853	3,577	2,637	6,414
February	3,170	3,058	7,955	5,939	4,253	1,535	7,156
March	3,524	3,433	8,829	5,658	4,985	1,136	8,149
April	3,859	3,199	7,792	5,654	4,164	1,622	6,031
May	3,238	3,745	8,186	5,798	4,952	1,962	6,789
June	3,648	3,021	5,377	3,411	4,636	1,497	7,660
<i>1994 - 95 -</i>							
July	3,511	2,787	3,793	2,752	3,159	2,177	5,743
August	2,750	3,104	6,061	3,538	3,272	2,443	6,611
September	3,284	2,550	8,132	7,529	3,934	3,052	6,803
October	3,209	3,094	8,284	6,603	2,509	n.y.a.	n.y.a.
November	2,845	3,729	8,900	8,196	3,322	n.y.a.	n.y.a.
PERCENTAGE CHANGE FROM PREVIOUS MONTH							
<i>1993 - 94 -</i>							
October	11.2	-8.1	-7.8	-2.8	17.3	26.7	-13.4
November	-10.7	12.0	7.1	19.9	6.7	-12.6	3.2
December	22.3	-27.4	-17.2	-33.4	-13.9	-4.7	4.7
January	-8.0	-0.8	-2.4	-21.8	7.6	-7.9	5.4
February	-6.8	20.3	5.7	22.4	18.9	-41.8	11.6
March	11.2	12.3	11.0	-4.7	17.2	-26.0	13.9
April	9.5	-6.8	-11.7	-0.1	-16.5	42.8	-26.0
May	-16.1	17.1	5.1	2.5	18.9	21.0	12.6
June	12.7	-19.3	-34.3	-41.2	-6.4	-7.7	12.8
<i>1994 - 95 -</i>							
July	-3.8	-7.7	-29.5	-19.3	-31.9	45.4	-25.0
August	-21.7	11.4	59.8	28.6	3.6	12.2	15.1
September	19.4	-17.8	34.2	112.8	20.2	24.9	2.9
October	-2.3	21.3	1.9	-12.3	-36.2	n.y.a.	n.y.a.
November	-11.3	20.5	7.4	24.1	32.4	n.y.a.	n.y.a.

CONSUMER PRICE INDEX: BY GROUP

Adelaide

Period	Food	Clothing	Housing	Household equipment and operation	Transport- ation	Tobacco and alcohol	Health and personal care	Recreation and education	All groups
ANNUAL AVERAGE (1989-90 = 100)									
1983-84	67.4	64.1	61.8	69.0	64.3	61.6	71.5	66.1	65.8
1984-85	71.2	68.4	68.3	73.2	68.3	67.2	57.8	68.9	68.9
1985-86	77.0	74.0	73.4	78.9	74.8	72.7	63.2	74.9	74.7
1986-87	83.2	81.8	76.9	84.3	83.0	79.4	75.6	82.1	81.5
1987-88	87.6	88.2	79.5	89.9	88.6	85.7	84.0	89.6	87.0
1988-89	95.2	95.3	87.0	95.1	94.2	92.5	90.8	94.6	93.3
1989-90	100.0	100.0	100.0	100.0	100.0	100.0	100.0	100.0	100.0
1990-91	103.8	103.6	104.1	105.4	107.0	112.0	113.4	104.8	106.2
1991-92	106.0	105.3	100.4	107.5	110.5	118.6	127.8	107.7	108.9
1992-93	109.3	107.0	94.3	107.6	115.0	131.2	134.9	110.7	111.2
1993-94	111.7	106.6	92.1	108.0	117.8	141.5	142.7	113.7	113.4
PERCENTAGE CHANGE FROM PREVIOUS YEAR, ANNUAL AVERAGE									
1984-85	5.6	6.7	10.5	6.1	6.2	9.1	-19.2	4.2	4.7
1985-86	8.1	8.2	7.5	7.8	9.5	8.2	9.3	8.7	8.4
1986-87	8.1	10.5	4.8	6.8	11.0	9.2	19.6	9.6	9.1
1987-88	5.3	7.8	3.4	6.6	6.7	7.9	11.1	9.1	6.7
1988-89	8.7	8.0	9.4	5.8	6.3	7.9	8.1	5.6	7.2
1989-90	5.0	4.9	14.9	5.2	6.2	8.1	10.1	5.7	7.2
1990-91	3.8	3.6	4.1	5.4	7.0	12.0	13.4	4.8	6.2
1991-92	2.1	1.6	-3.6	2.0	3.3	5.9	12.7	2.8	2.5
1992-93	3.1	1.6	-6.1	0.1	4.1	10.6	5.6	2.8	2.1
1993-94	2.2	-0.4	-2.3	0.4	2.4	7.9	5.8	2.7	2.0
QUARTERLY (1989-90=100.0)									
1992 - 93 - September	107.3	106.0	95.4	108.1	113.7	126.5	131.5	108.9	110.1
December	108.1	107.2	94.0	108.1	115.1	130.4	132.2	109.9	110.7
March	111.3	107.2	94.0	106.7	114.9	131.3	136.8	111.7	111.6
June	110.4	107.6	93.8	107.3	116.1	136.4	138.9	112.3	112.3
1993 - 94 - September	110.4	107.5	93.3	107.5	117.3	138.8	138.7	112.8	112.7
December	111.3	107.1	91.6	108.2	117.6	140.0	138.4	113.0	112.8
March	112.0	106.0	91.6	107.9	117.6	142.6	145.5	114.1	113.6
June	113.0	105.8	91.9	108.2	118.5	144.5	148.2	114.8	114.4
1994 - 95 - September	114.5	105.2	92.4	108.3	119.6	144.2	148.3	115.1	114.9
PERCENTAGE CHANGE FROM SAME QUARTER OF PREVIOUS YEAR									
1992 - 93 - September	2.3	0.9	-6.7	0.9	4.1	7.8	8.5	2.5	1.9
December	2.1	2.2	-8.1	0.5	4.2	10.4	6.4	2.9	1.7
March	4.6	1.9	-5.8	-0.6	3.6	10.2	2.0	2.7	1.9
June	3.3	1.4	-3.6	-0.7	4.4	14.0	5.5	3.1	2.7
1993 - 94 - September	2.9	1.4	-2.2	-0.6	3.2	9.7	5.5	3.6	2.4
December	3.0	-0.1	-2.6	0.1	2.2	7.4	4.7	2.8	1.9
March	0.6	-1.1	-2.6	1.1	2.3	8.6	6.4	2.1	1.8
June	2.4	-1.7	-2.0	0.8	2.1	5.9	6.7	2.2	1.9
1994 - 95 - September	3.7	-2.1	-1.0	0.7	2.0	3.9	6.9	2.0	2.0
PERCENTAGE CHANGE FROM PREVIOUS QUARTER									
1992 - 93 - December	0.7	1.1	-1.5	0.0	1.2	3.1	0.5	0.9	0.5
March	3.0	0.0	0.0	-1.3	-0.2	0.7	3.5	1.6	0.8
June	-0.8	0.4	-0.2	0.6	1.0	3.9	1.5	0.5	0.6
1993 - 94 - September	0.0	-0.1	-0.5	0.2	1.0	1.8	-0.1	0.4	0.4
December	0.8	-0.4	-1.8	0.7	0.3	0.9	-0.2	0.2	0.1
March	0.6	-1.0	0.0	-0.3	0.0	1.9	5.1	1.0	0.7
June	0.9	-0.2	0.3	0.3	0.8	1.3	1.9	0.6	0.7
1994 - 95 - September	1.3	-0.6	0.5	0.1	0.9	-0.2	0.1	0.3	0.4

**AVERAGE RETAIL PRICES OF SELECTED CONSUMER ITEMS, ADELAIDE
(Cents)**

Item	Unit	Quarter					
		June 1993	Sept. 1993	Dec. 1993	Mar. 1994	June 1994	Sept. 1994
Milk, carton, supermarket sales	1 litre	90	91	95	97	97	101
Cheese, processed, sliced, wrapped	500g	359	333	337	333	348	330
Butter	500g	148	151	161	161	156	161
Bread, white loaf, sliced, supermarket sales	680g	125	117	122	121	126	125
Self-raising flour	2kg	197	202	188	183	192	205
Beef:							
Rump steak	1kg	1,084	1,069	1,086	1,104	1,164	1,180
Corned silverside	1kg	621	630	612	632	651	672
Lamb:							
Leg	1kg	464	520	501	521	532	507
Loin Chops	1kg	640	694	665	658	699	666
Forequarter chops	1kg	472	511	482	495	499	500
Pork:							
Leg	1kg	582	585	609	585	569	598
Loin Chops	1kg	719	731	738	729	743	753
Chicken, frozen	1kg	323	318	330	317	329	325
Bacon, middle rashers	250g pkt	272	268	273	293	290	260
Sausages	1kg	364	363	365	369	364	373
Potatoes	1kg	83	71	72	59	63	60
Onions	1kg	152	192	215	120	95	100
Peaches, canned	825g	193	205	196	191	191	194
Eggs, 55g	doz	180	182	180	172	166	163
Sugar, white	2kg	164	206	193	196	190	199
Tea	250g	154	158	169	166	164	159
Coffee, instant, jar	150g	399	398	397	389	384	512
Margarine, polyunsaturated	500g	143	133	142	138	136	140
Petrol:							
Leaded(a)	1 litre	70.4	70.0	70.2	68.9	70.7	71.5
Unleaded(b)	1 litre	68.2	69.6	69.7

(a) Description change only, from super grade to leaded.

(b) introduced from March quarter 1994.

**ESTIMATED RESIDENT POPULATION AND COMPONENTS OF POPULATION CHANGE
South Australia**

Period	Components of population change						Total increase	Population at end of period
	Live births	Deaths	Natural increase	Net migration				
				Interstate	Overseas (a)			
ANNUAL								
1983-84	20,118	9,799	10,319	553	3,969	14,273	1,360,048	
1984-85	19,901	10,204	9,697	-2,317	4,329	11,149	1,371,197	
1985-86	19,657	10,427	9,230	-1,417	5,084	11,353	1,382,550	
1986-87	19,628	10,577	9,051	-3,977	6,200	10,214	1,392,764	
1987-88	19,288	10,799	8,489	-1,240	5,952	12,145	1,404,909	
1988-89	19,528	10,814	8,664	-221	6,665	14,120	1,419,029	
1989-90	19,653	11,329	8,253	-252	5,762	13,027	1,432,056	
1990-91	19,966	11,120	8,767	1,545	4,619	14,243	1,446,299	
1991-92	19,530	11,035	8,532	-133	2,897	11,296	1,457,595	
1992-93	19,686	11,163	8,403	-4,650	1,546	5,299	1,462,894	
1993-94	20,030	11,733	8,230	-3,466	2,126	6,890	1,469,784	
MONTHLY/QUARTERLY								
1993 - 94 -								
October	2,037	1,190	
November	1,497	948	
December	1,474	848	2,008	-669	125	1,444	1,466,565	
January	1,594	851	
February	1,156	809	
March	2,281	1,071	2,286	-1,290	1,044	2,040	1,468,605	
April	1,487	741	
May	1,756	1,050	
June	1,589	1,072	1,955	-822	46	1,179	1,469,784	
1994 - 95 -								
July	1,409	1,038	
August	1,788	1,164	
September	1,332	995	n.y.a.	n.y.a.	n.y.a.	n.y.a.	n.y.a.	
October	1,541	926	
November	1,989	992	
December	n.y.a.	n.y.a.	n.y.a.	n.y.a.	n.y.a.	n.y.a.	n.y.a.	

(a) Includes category jumping.

LABOUR FORCE STATUS OF THE CIVILIAN POPULATION
(**'000**)

Period	Employed Full-time Males	Employed Full-time Females	Employed Part-time Males	Employed Part-time Females	Employed Total Males	Employed Total Females	Unem- ployed Males	Unem- ployed Females	Labour Force Males	Labour Force Females
ANNUAL AVERAGE										
1985-86	336.3	134.3	24.4	98.9	360.7	233.2	32.2	22.4	392.9	255.6
1986-87	337.1	137.0	25.4	106.6	362.5	243.6	35.6	24.5	398.1	268.1
1987-88	334.4	137.4	29.3	111.6	363.7	249.0	35.1	24.9	398.8	273.9
1988-89	345.5	145.3	29.7	115.8	375.2	261.1	32.2	22.5	407.4	283.6
1989-90	352.0	149.3	31.5	119.8	383.5	269.1	28.5	20.9	412.0	290.0
1990-91	345.2	148.4	34.1	125.7	379.3	274.1	37.8	25.3	417.1	299.4
1991-92	323.3	145.7	37.5	121.6	360.8	267.3	50.0	29.3	410.8	296.6
1992-93	322.2	143.2	39.2	126.8	361.4	270.0	51.9	29.9	413.3	299.9
1993-94	322.0	146.3	40.0	127.0	362.0	273.3	47.3	29.9	409.3	303.2
PERCENTAGE CHANGE FROM PREVIOUS YEAR: ANNUAL AVERAGE										
1986-87	0.2	2.0	4.1	7.8	0.5	4.5	10.6	9.4	1.3	4.9
1987-88	-0.8	0.3	15.4	4.7	0.3	2.2	-1.4	1.6	0.2	2.2
1988-89	3.3	5.7	1.4	3.8	3.2	4.9	-8.3	-9.6	2.2	3.5
1989-90	1.9	2.8	6.1	3.5	2.2	3.1	-11.5	-7.1	1.1	2.3
1990-91	-1.9	-0.6	8.3	4.9	-1.1	1.9	32.6	21.1	1.2	3.2
1991-92	-6.3	-1.8	10.0	-3.3	-4.9	-2.5	32.3	15.8	-1.5	-0.9
1992-93	-0.3	-1.7	4.5	4.3	0.2	1.0	3.8	2.0	0.6	1.1
1993-94	-0.1	2.2	2.0	0.2	0.2	1.2	-8.9	0.0	-1.0	1.1
MONTHLY, ORIGINAL SERIES										
1993 - 94 -										
November	320.4	145.9	42.3	127.9	362.7	273.7	47.5	28.9	410.2	302.6
December	326.1	153.1	41.7	126.0	367.8	279.0	48.3	31.8	416.1	310.8
January	320.5	145.8	40.8	122.5	361.3	268.3	54.1	33.7	415.4	302.0
February	322.2	149.2	37.4	123.1	359.6	272.3	50.1	33.6	409.6	305.9
March	323.5	143.9	41.1	129.1	364.5	273.0	47.4	32.6	411.9	305.6
April	322.2	144.1	39.7	130.4	361.9	274.5	44.5	27.4	406.4	301.9
May	324.4	141.3	39.4	133.0	363.8	274.3	43.8	31.0	407.6	305.3
June	325.9	145.4	35.3	128.5	361.1	273.9	44.6	31.1	405.7	305.0
1994 - 95 -										
July	325.5	146.7	40.5	136.3	366.0	283.0	42.5	30.4	408.5	313.3
August	325.2	146.2	37.6	133.1	362.8	279.4	44.4	28.7	407.2	308.1
September	328.5	151.4	36.9	133.0	365.5	284.4	44.6	30.2	410.0	314.6
October	329.2	151.6	37.7	128.0	366.9	279.6	43.6	29.5	410.5	309.1
November	322.8	155.5	41.5	126.3	364.2	281.9	42.2	29.7	406.5	311.6
December	322.3	153.2	41.7	132.0	364.0	285.2	45.1	28.9	409.0	314.1
MONTHLY, TREND ESTIMATES										
1993 - 94 -										
November	320.7	146.4	41.4	127.0	362.1	273.4	48.6	30.2	410.7	303.6
December	320.9	146.1	41.3	127.0	362.2	273.1	48.7	30.5	410.9	303.6
January	321.2	145.8	40.8	126.9	362.0	272.7	48.5	30.4	410.5	303.1
February	321.7	145.4	40.1	126.8	361.8	272.2	47.8	30.2	409.6	302.4
March	322.2	145.0	39.5	127.1	361.7	272.1	46.9	30.2	408.6	302.3
April	323.0	144.9	39.0	128.0	362.0	272.9	46.1	30.5	408.1	303.4
May	324.3	145.2	38.6	129.5	362.9	274.7	45.4	31.1	408.3	305.7
June	326.0	146.2	38.1	130.9	364.1	277.1	44.8	31.6	409.0	308.7
1994 - 95 -										
July	327.3	147.6	37.9	131.9	365.2	279.5	44.5	31.8	409.8	311.3
August	327.9	149.1	37.9	132.0	365.8	281.1	44.4	31.6	410.2	312.7
September	327.6	150.4	38.1	131.6	365.7	282.0	44.4	31.1	410.1	313.1
October	326.4	151.4	38.7	130.9	365.1	282.3	44.4	30.5	409.6	312.8
November	324.8	152.2	39.5	130.3	364.3	282.5	44.5	29.8	408.7	312.3
December	323.0	152.6	40.4	129.9	363.4	282.5	44.4	29.2	407.8	311.7
TREND, PERCENTAGE CHANGE FROM PREVIOUS MONTH										
1993 - 94 -										
December	0.1	-0.2	-0.2	0.0	0.0	-0.1	0.2	1.0	0.0	0.0
January	0.1	-0.2	-1.2	-0.1	-0.1	-0.1	-0.4	-0.3	-0.1	-0.2
February	0.2	-0.3	-1.7	-0.1	-0.1	-0.2	-1.4	-0.7	-0.2	-0.2
March	0.2	-0.3	-1.5	0.2	0.0	0.0	-1.9	0.0	-0.2	0.0
April	0.2	-0.1	-1.3	0.7	0.1	0.3	-1.7	1.0	-0.1	0.4
May	0.4	0.2	-1.0	1.2	0.2	0.7	-1.5	2.0	0.0	0.8
June	0.5	0.7	-1.3	1.1	0.3	0.9	-1.3	1.6	0.2	1.0
1994 - 95 -										
July	0.4	1.0	-0.5	0.8	0.3	0.9	-0.7	0.6	0.2	0.8
August	0.2	1.0	0.0	0.1	0.2	0.6	-0.2	-0.6	0.1	0.4
September	-0.1	0.9	0.5	-0.3	0.0	0.3	0.0	-1.6	0.0	0.1
October	-0.4	0.7	1.6	-0.5	-0.2	0.1	0.0	-1.9	-0.1	-0.1
November	-0.5	0.5	2.1	-0.5	-0.2	0.1	0.2	-2.3	-0.2	-0.2
December	-0.6	0.3	2.3	-0.3	-0.2	0.0	-0.2	-2.0	-0.2	-0.2

LABOUR FORCE STATUS OF THE CIVILIAN POPULATION AGED 15 AND OVER

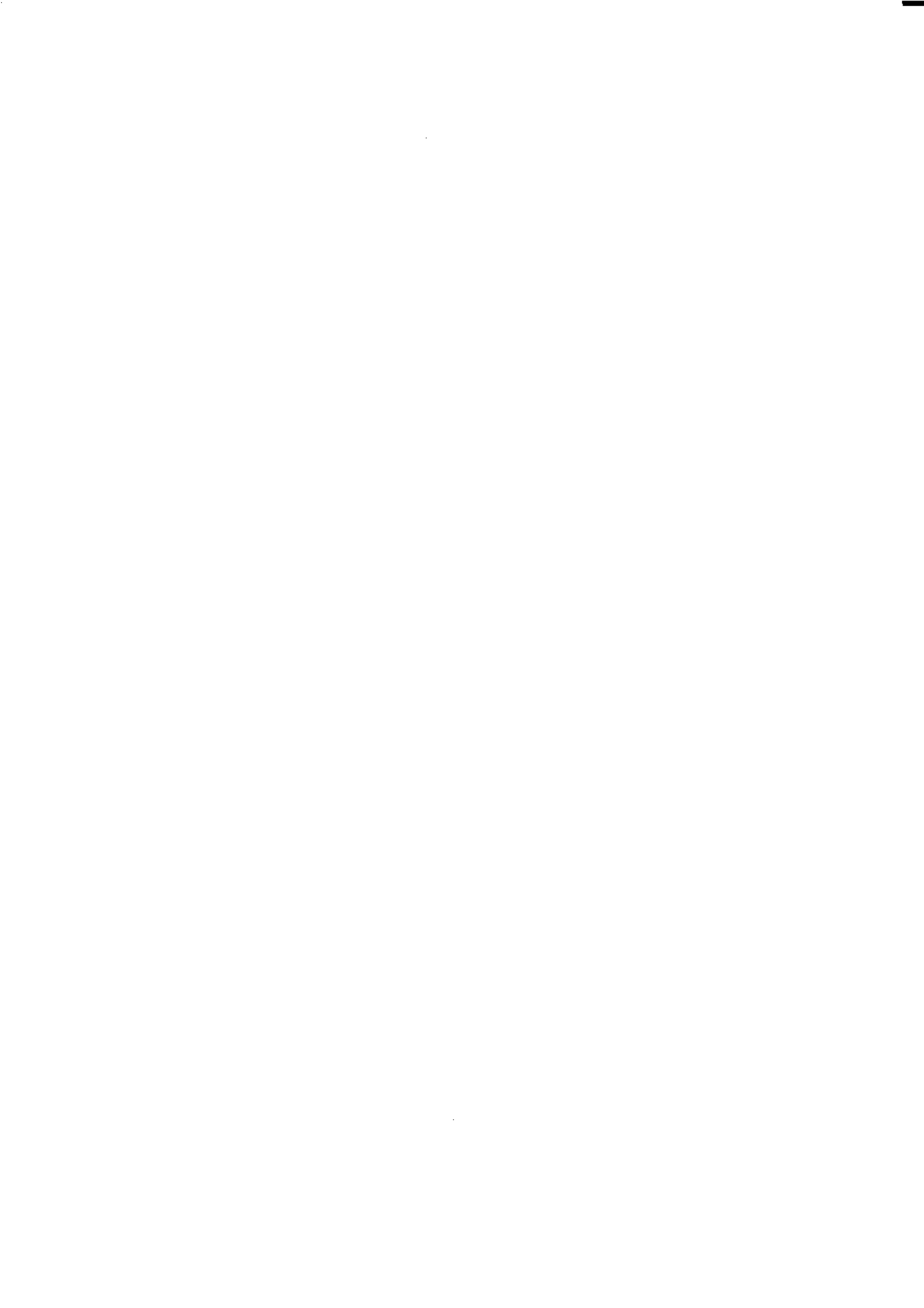
Period	Civilian Population aged 15 and over (0000)	Civilian Population aged 15 and over (0000)	Unemploy- ment rate Ages 15-19 (%)	Unemploy- ment rate All Ages (%)	Unemploy- ment rate All Ages (%)	Unemploy- ment rate All Ages (%)	Partici- pation rate (%)	Partici- pation rate (%)	Partici- pation rate (%)
	Males	Females	Persons	Males	Females	Persons	Males	Females	Persons
ANNUAL AVERAGE									
1984-85	518.8	538.9	22.1	9.0	9.6	9.2	74.9	45.4	59.9
1985-86	526.9	545.6	20.6	8.2	8.8	8.4	75.6	46.8	60.5
1986-87	534.8	552.4	22.1	8.9	9.1	9.0	74.4	48.5	61.3
1987-88	542.4	560.0	20.8	8.8	9.1	8.9	73.5	48.9	61.0
1988-89	547.9	566.9	17.8	7.9	7.9	7.9	74.3	50.0	62.0
1989-90	552.4	573.4	16.2	6.9	7.2	7.1	74.6	50.6	62.4
1990-91	558.3	579.8	19.2	9.1	8.4	8.8	74.7	51.6	63.0
1991-92	563.9	585.4	25.0	12.1	9.9	11.2	72.9	50.7	61.6
1992-93	567.4	588.9	26.6	12.6	10.0	11.5	72.8	51.0	61.7
1993-94	570.6	592.0	28.3	11.5	9.8	10.8	71.7	51.2	61.3
PERCENTAGE CHANGE FORM PREVIOUS YEARS, ANNUAL AVERAGE									
1985-86	1.6	1.2	n.a.	n.a.	n.a.	n.a.	n.a.	n.a.	n.a.
1986-87	1.5	1.2
1987-88	1.4	1.4
1988-89	1.0	1.2
1989-90	0.8	1.1
1990-91	1.1	1.1
1991-92	1.0	1.0
1992-93	0.6	0.6
1993-94	0.6	0.6
MONTHLY, ORIGINAL SERIES									
1993 - 94 -									
November	570.2	591.6	30.1	11.6	9.5	10.7	71.9	51.2	61.4
December	570.5	591.9	28.8	11.6	10.2	11.0	72.9	52.5	62.5
January	570.8	592.2	31.1	13.0	11.1	12.2	72.8	51.0	61.7
February	571.1	592.4	30.9	12.2	11.0	11.7	71.7	51.6	61.5
March	571.4	592.7	27.5	11.5	10.7	11.2	72.1	51.6	61.6
April	571.7	592.9	25.8	10.9	9.1	10.2	71.1	50.9	60.8
May	571.9	593.1	30.1	10.7	10.2	10.5	71.3	51.5	61.2
June	572.1	593.3	28.8	11.0	10.2	10.6	70.9	51.4	61.0
1994 - 95 -									
July	572.4	593.6	25.3	10.4	9.7	10.1	71.4	52.8	61.9
August	572.7	593.8	27.3	10.9	9.3	10.2	71.1	51.9	61.3
September	572.9	594.0	28.3	10.9	9.6	10.3	71.6	53.0	62.1
October	573.2	594.2	29.3	10.6	9.6	10.2	71.6	52.0	61.6
November	573.4	594.4	26.1	10.4	9.5	10.0	70.9	52.4	61.5
December	573.6	594.6	n.y.a.	11.0	9.2	10.2	71.3	52.8	61.9
MONTHLY, TREND SERIES									
1993 - 94 -									
October	n.a.	n.a.	n.a.	11.7	9.8	10.9	72.0	51.3	61.4
November				11.8	10.0	11.0	72.0	51.3	61.5
December				11.9	10.0	11.1	72.0	51.3	61.5
January				11.8	10.0	11.0	71.9	51.2	61.4
February				11.7	10.0	11.0	71.7	51.0	61.2
March				11.5	10.0	10.8	71.5	51.0	61.1
April				11.3	10.1	10.8	71.4	51.2	61.1
May				11.1	10.2	10.7	71.4	51.5	61.3
June				11.0	10.2	10.7	71.5	52.0	61.6
1994 - 95 -									
July				10.9	10.2	10.6	71.6	52.4	61.8
August				10.8	10.1	10.5	71.6	52.7	62.0
September				10.8	9.9	10.4	71.6	52.7	62.0
October				10.9	9.7	10.4	71.5	52.6	61.9
November				10.9	9.5	10.3	71.3	52.5	61.7
December				10.9	9.4	10.2	71.1	52.4	61.6

AVERAGE WEEKLY EARNINGS OF EMPLOYEES
South Australia

Period	Full-time adults						All employees		
	Ordinary time earnings			Total earnings			Males	Females	Persons
	Males	Females	Persons	Males	Females	Persons			
ANNUAL AVERAGE (\$ per week)									
1983-84	358.30	294.50	339.90	377.60	300.20	355.20	346.60	218.30	294.00
1984-85	381.90	319.30	364.80	407.40	325.80	385.10	367.20	238.70	316.20
1985-86	406.30	340.50	388.30	431.80	346.60	408.40	389.00	252.70	334.50
1986-87	431.80	363.70	412.20	455.90	370.20	431.20	411.80	268.90	352.20
1987-88	458.60	389.70	438.40	485.00	397.00	459.20	440.10	295.10	379.60
1988-89	481.50	424.30	465.70	517.60	435.10	494.90	473.40	315.10	408.50
1989-90	517.50	454.90	499.40	560.70	466.50	533.50	511.60	338.00	437.80
1990-91	561.30	486.10	537.90	598.90	496.10	566.90	546.70	358.10	462.00
1991-92	588.40	524.10	567.80	624.90	534.00	595.80	564.80	386.90	483.70
1992-93	610.10	534.90	585.40	646.40	546.80	613.70	560.00	382.60	477.40
1993-94	625.10	547.60	600.00	667.50	560.10	632.70	595.10	396.60	503.30
PERCENTAGE CHANGE FROM PREVIOUS YEAR									
1984-85	6.6	8.4	7.3	7.9	8.5	8.4	5.9	9.3	7.6
1985-86	6.4	6.6	6.4	6.0	6.4	6.1	5.9	5.9	5.8
1986-87	6.3	6.8	6.2	5.6	6.8	5.6	5.9	6.4	5.3
1987-88	6.2	7.1	6.4	6.4	7.2	6.5	6.9	9.7	7.8
1988-89	5.0	8.9	6.2	6.7	9.6	7.8	7.6	6.8	7.6
1989-90	7.5	7.2	7.2	8.3	7.2	7.8	8.1	7.3	7.2
1990-91	8.5	6.9	7.7	6.8	6.3	6.3	6.9	5.9	5.5
1991-92	4.8	7.8	5.6	4.3	7.6	5.1	3.3	8.0	4.7
1992-93	3.7	2.1	3.1	3.4	2.4	3.0	-0.8	-1.1	-1.3
1993-94	2.5	2.4	2.5	3.3	2.4	3.1	6.3	3.7	5.4
QUARTERLY (\$ per week)									
1992 - 93 -									
21 August	609.80	529.70	582.60	644.40	542.30	609.80	567.70	386.30	477.30
20 November	610.30	532.80	585.00	647.60	543.90	613.70	547.10	377.00	469.90
19 February	610.10	533.30	584.80	648.50	543.90	614.10	559.50	381.60	477.70
20 May	610.00	543.70	589.00	645.10	557.10	617.20	565.50	385.30	484.50
1993 - 94 -									
20 August	631.00	546.90	603.30	673.30	559.50	635.80	599.70	394.20	503.10
19 November	626.50	543.20	599.40	667.10	554.90	630.70	583.50	386.70	492.50
18 February	619.90	548.80	597.30	665.30	558.80	631.50	601.30	405.50	512.80
20 May	622.90	551.40	599.80	664.30	567.10	632.90	595.80	399.80	504.80
1994 - 95 -									
19 August	628.20	553.70	602.60	674.20	566.70	637.20	591.40	410.80	507.40
PERCENTAGE CHANGE FROM CORRESPONDING REFERENCE DATE IN PREVIOUS YEAR									
1992 - 93 -									
20 November	0.1	0.6	0.4	0.5	0.3	0.6	-3.6	-2.4	-1.6
19 February	0.0	0.1	0.0	0.1	0.0	0.1	2.3	1.2	1.7
20 May	0.0	2.0	0.7	-0.5	2.4	0.5	1.1	1.0	1.4
1993 - 94 -									
20 August	3.4	0.6	2.4	4.4	0.4	3.0	6.0	2.3	3.8
19 November	-0.7	-0.7	-0.6	-0.9	-0.8	-0.8	-2.7	-1.9	-2.1
18 February	-1.1	1.0	-0.4	-0.3	0.7	0.1	3.1	4.9	4.1
20 May	0.5	0.5	0.4	-0.2	1.5	0.2	-0.9	-1.4	-1.6
1994 - 95 -									
19 August	0.9	0.4	0.5	1.5	-0.1	0.7	-0.7	2.8	0.5
PERCENTAGE CHANGE FROM PREVIOUS REFERENCE DATE									
1992 - 93 -									
20 November	0.1	0.6	0.4	0.5	0.3	0.6	-3.6	-2.4	-1.6
19 February	0.0	0.1	0.0	0.1	0.0	0.1	2.3	1.2	1.7
20 May	0.0	2.0	0.7	-0.5	2.4	0.5	1.1	1.0	1.4
1993 - 94 -									
20 August	3.4	0.6	2.4	4.4	0.4	3.0	6.0	2.3	3.8
19 November	-0.7	-0.7	-0.6	-0.9	-0.8	-0.8	-2.7	-1.9	-2.1
18 February	-1.1	1.0	-0.4	-0.3	0.7	0.1	3.1	4.9	4.1
20 May	0.5	0.5	0.4	-0.2	1.5	0.2	-0.9	-1.4	-1.6
1994 - 95 -									
19 August	0.9	0.4	0.5	1.5	-0.1	0.7	-0.7	2.8	0.5

FINANCE COMMITMENTS
South Australia

<i>Secured housing finance commitments to individuals</i>						
<i>Construction and purchase of dwellings</i>						
<i>Period</i>	<i>Number of dwelling units</i>	<i>Amount (\$ million)</i>	<i>Alterations and additions (\$ million)</i>	<i>Personal finance commitments (\$ million)</i>	<i>Commercial finance commitments (\$ million)</i>	<i>Lease finance commitments (\$ million)</i>
ANNUAL						
1983-84	27,968	894.0	45.2	n.a.	n.a.	n.a.
1984-85	28,484	1,127.6	48.2	n.a.	n.a.	n.a.
1985-86	21,714	920.1	48.9	1,203.9	3,492.7	339.8
1986-87	21,658	965.5	47.1	1,222.4	4,242.8	334.5
1987-88	26,582	1,266.6	47.0	1,448.9	6,486.6	392.1
1988-89	29,977	1,574.2	51.4	1,534.1	7,285.5	512.4
1989-90	25,650	1,438.2	45.8	1,525.7	6,926.4	445.4
1990-91	28,694	1,731.3	58.8	1,503.6	6,257.0	323.2
1991-92	31,765	2,083.8	88.8	1,456.7	6,666.4	256.2
1992-93	36,960	2,569.5	102.8	1,656.8	5,122.4	249.5
1993-94	45,725	3,387.9	221.8	1,794.8	5,467.2	207.3
PERCENTAGE CHANGE FROM PREVIOUS YEAR						
1984-85	1.8	26.1	6.6	n.a.	n.a.	n.a.
1985-86	-23.8	-18.4	1.5	n.a.	n.a.	n.a.
1986-87	-0.3	4.9	-3.7	1.5	21.5	-1.6
1987-88	22.7	31.2	-0.2	18.5	52.9	17.2
1988-89	12.8	24.3	9.4	5.9	12.3	30.7
1989-90	-14.4	-8.6	-10.9	-0.5	-4.9	-13.1
1990-91	11.9	20.4	28.4	-1.4	-9.7	-27.4
1991-92	10.7	20.4	51.0	-3.1	6.5	-20.7
1992-93	16.4	23.3	15.8	13.7	-23.2	-2.6
1993-94	23.7	31.9	115.8	8.3	6.7	-16.9
MONTHLY						
<i>1993 - 94 -</i>						
September	3,743	269.0	14.6	105.6	407.2	25.3
October	3,348	243.8	13.3	136.6	395.2	17.5
November	3,489	250.2	16.3	147.6	456.9	17.3
December	3,976	287.4	18.4	161.9	392.5	17.2
January	3,212	226.0	19.2	152.2	343.9	12.0
February	4,093	301.5	20.0	146.7	400.0	17.2
March	4,850	375.1	29.3	178.8	709.5	24.4
April	3,702	287.5	22.6	140.0	466.1	17.7
May	4,011	310.7	20.6	162.0	438.4	22.6
June	4,086	317.8	19.9	167.8	595.3	36.1
<i>1994 - 95 -</i>						
July	3,419	263.8	20.6	164.3	432.6	26.5
August	3,580	276.2	25.0	169.4	701.4	25.6
September	3,209	248.5	17.5	165.9	361.3	24.5
October	3,051	234.0	20.1	160.3	417.6	20.6
PERCENTAGE CHANGE FROM PREVIOUS MONTH						
<i>1993 - 94 -</i>						
October	-10.6	-9.4	-9.0	29.4	-2.9	-30.9
November	4.2	2.6	23.0	8.1	15.6	-0.8
December	14.0	14.8	12.9	9.7	-14.1	-1.0
January	-19.2	-21.4	4.3	-6.0	-12.4	-30.3
February	27.4	33.4	4.2	-3.6	16.3	43.6
March	18.5	24.4	46.5	21.9	77.4	41.9
April	-23.7	-23.4	-22.9	-21.7	-34.3	-27.5
May	8.3	8.1	-8.8	15.7	-5.9	27.7
June	1.9	2.3	-3.4	3.6	35.8	59.7
<i>1994 - 95 -</i>						
July	-16.3	-17.0	3.5	-2.1	-27.3	-26.6
August	4.7	4.7	21.4	3.1	62.1	-3.4
September	-10.4	-10.0	-30.0	-2.1	-48.5	-4.3
October	-4.9	-5.8	14.9	-3.4	15.6	-15.9



PUBLICATIONS SOURCE INDEX

1	<i>Australian National Accounts: State Accounts (5242.0) Quarterly</i>
2	<i>International Merchandise Trade, Australia (5422.0) Quarterly</i>
3	<i>International Merchandise Trade, Australia (5422.0) Quarterly</i>
4	<i>Retail Trade, Australia (8501.0) Monthly</i>
5	<i>Motor Vehicle Registrations, Australia, Preliminary (9301.0) Monthly</i>
6	<i>Tourist Accommodation, Australia (8635.0) Quarterly</i>
7	<i>State Estimates of Private New Capital Expenditure (5646.0) Quarterly</i>
8	<i>Building Approvals, Australia (8731.0) Monthly</i>
9	<i>Building Activity, Australia (8752.0.40.001) Quarterly</i>
9a	<i>Building Activity, Australia : Dwelling Unit Commencements, Preliminary (8750.0) Quarterly</i>
10	<i>Engineering Construction Activity, Australia (8762.0) Quarterly</i>
11	<i>Manufacturing Production, Australia, Preliminary (8301.0) Monthly</i>
12	<i>Manufacturing Production, Australia, Preliminary (8301.0) Monthly</i>
13	<i>Manufacturing Production, Australia, Preliminary (8301.0) Monthly</i>
14	<i>Livestock Products, Australia (7215.0) Monthly</i>
15	<i>Actual and Expected Private Mineral Exploration, Australia (8412.0) Quarterly</i>
16	<i>Consumer Price Index (6401.0) Quarterly</i>
17	<i>Price Index of Materials Used in House Building, Six State Capital Cities and Canberra (6408.0) Monthly</i>
18	<i>Price Index of Materials Used in Building Other Than House Building, Eight Capital Cities (6407.0) Monthly</i>
19	<i>House Price Indexes: Eight Capital Cities (6416.0) Quarterly</i>
20	<i>Australian Demographic Statistics (3101.0) Quarterly</i>
21	<i>The Labour Force, Australia, Preliminary (6202.0) Monthly</i>
22	<i>Job Vacancies and Overtime, Australia (6354.0) Quarterly</i>
23	<i>Industrial Disputes, Australia (6321.0) Monthly</i>
24	Unpublished overseas arrival and departure statistics on microfiche
25	<i>Average Weekly Earnings, States and Australia (6302.0) Quarterly</i>
26	<i>Award Rates of Pay Indexes, Australia (6312.0) Monthly</i>
27	<i>Housing Finance for Owner Occupation, Australia (5609.0) Monthly</i>
28	Unpublished statistics available from PC AUSSTATS
29	Unpublished statistics available from PC AUSSTATS
30	Unpublished statistics available from PC AUSSTATS
31	<i>Reserve Bank of Australia Bulletin</i>

ABS PUBLICATIONS AND PRODUCTS

Statistics collected by the ABS are generally made available to clients in published form. Some, including those not published, are available in one or more of the following forms: microfiche, magnetic tape, computer printout, CD, floppy disk, photocopy and clerically extracted tabulation.

Current publications produced by the ABS are listed in the *Catalogue of Publications and Products, Australia* (1101.0). The ABS also issues on Tuesdays and Fridays a *Publications Advice* (1105.0) which lists publications to be released within the next few days. The *Catalogue* and *Publications Advice* are available from any ABS Office.

To receive ABS publications on a regular basis contact the *ABS Publication Mailing Service* on (008) 02 0608.

A large range of data is available via on-line services, diskette, magnetic tape, tape cartridge and CD ROM. For more details about our electronic data services, contact any ABS Office.

The *ABS Information Consultancy Service* has specialist staff to assist and advise clients with their statistical inquiries. For more detailed information about

these services call at the ABS, 55 Currie Street, Adelaide, telephone the Information Officer on (08) 237 7100, or write to Information Service, ABS, GPO Box 2272, Adelaide 5001.

The ABS also provides a *Statistical Consultancy Service*, for expert assistance in survey, sample and questionnaire design, data collection, processing and analysis, and statistical modelling. For more information contact Gary Niedorfer, telephone (08) 237 7379.

SYMBOLS AND OTHER USAGES

n.a.	not available
n.y.a.	not yet available
..	not applicable
0, 0.0	nil or rounded to zero

Where figures have been rounded, discrepancies may occur between sums of the component items and totals.









© Commonwealth of Australia 1995

Recommended retail price: \$12.00



2130740002953
ISSN 1039-8880